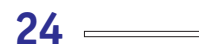
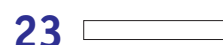
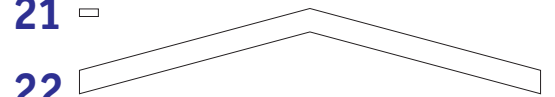
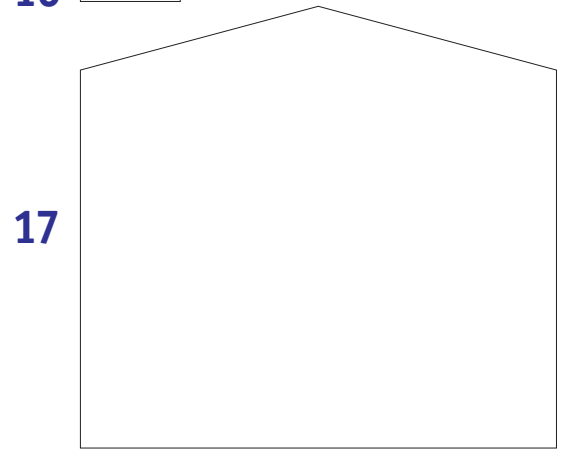
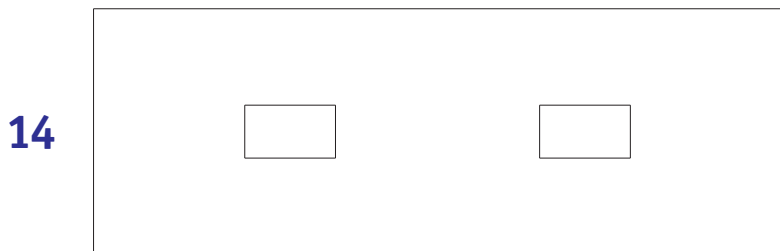
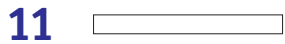
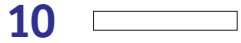
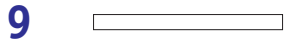
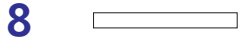
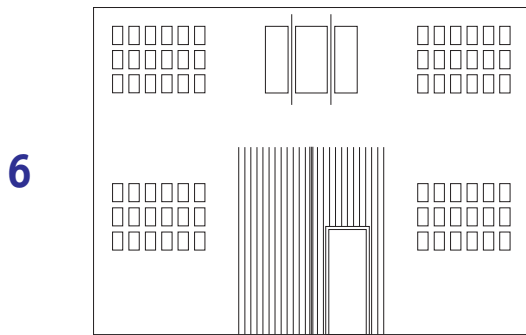
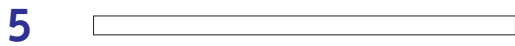
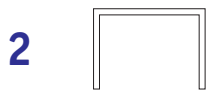
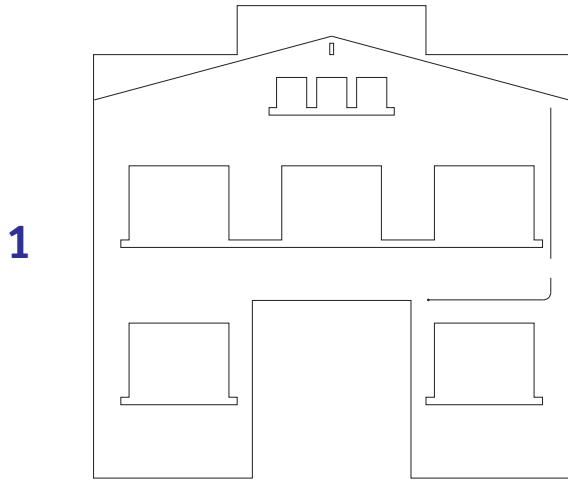


**H1006 Nave industrial pequeña**  
**época III-IV**  
escala H0



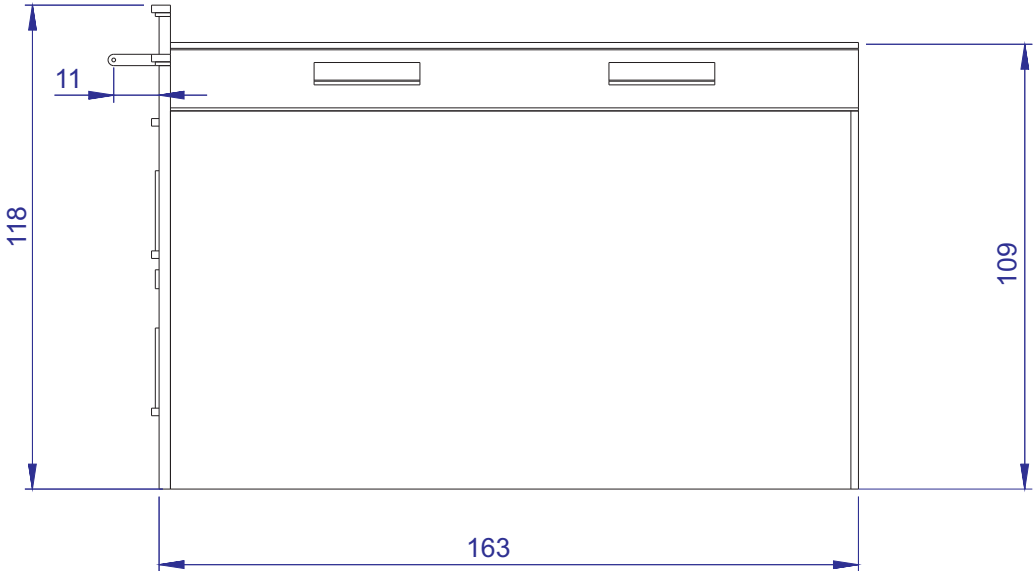
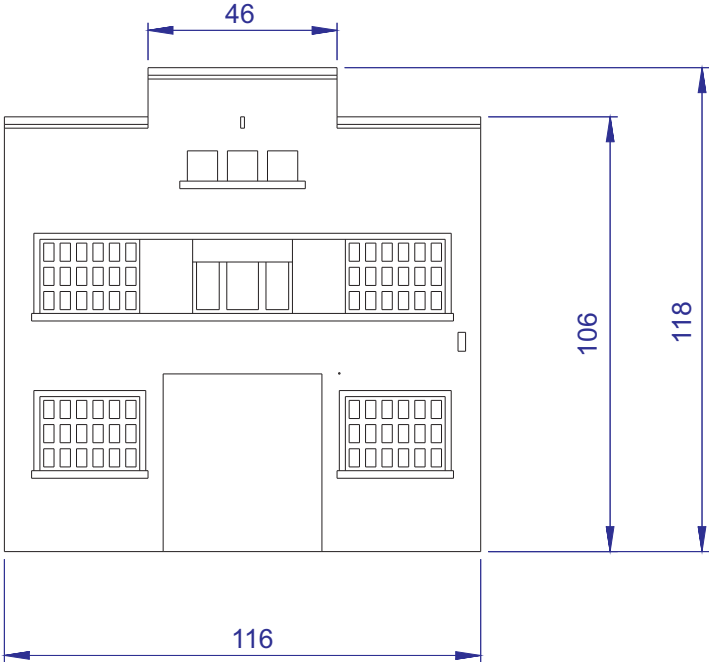
Despiece  
Planos  
Manual de montaje

# Despiece



<b>Numero de pieza</b>	<b>descripción</b>	<b>material</b>	<b>unidades</b>	<b>observaciones</b>
1	fachada ppal	cartomat C200	1	
2	marco ventana planta baja	cartomat C100	2	
3	repisa ventana planta baja	cartomat C150	2	
4	marco ventana planta 1	cartomat C100	1	
5	repisa ventana planta 1	cartomat C150	1	
6	carpintería	cartulina color	1	verde claro
7	repisa ventanas desván	cartomat C150	1	
8	cornisa inferior laterales	cartomat C100	2	
9	cornisa inferior central	cartomat C100	1	
10	cornisa superior laterales	cartomat C200	2	
11	cornisa superior central	cartomat C200	1	
12	viga superior	cartomat C100	1	
13	cumbrera tejado	cartulina color	1	negro
14	tejado fibrocemento	ondulado CC125	2	
15	acristalamiento	acetato	1	
16	persiana ventana central	cartulina color	1	blanco
17	muro trasero	cartomat C100	1	
18	muros laterales	cartomat C100	2	
19	marco lucernario cubierta	cartomat C150	4	
20	crystal lucernario cubierta	acetato	4	
21	caja eléctrica	cartomat C100	1	ya pegado en la fachada
22	pórtico interior	cartomat C200	1	
23	ala viga	cartulina color	1	negro
24	tubo electricidad recto	alambre 0,5mm	1	
25	tubo electricidad angular	alambre 0,5mm	1	

# Planos



# Manual de montaje

