

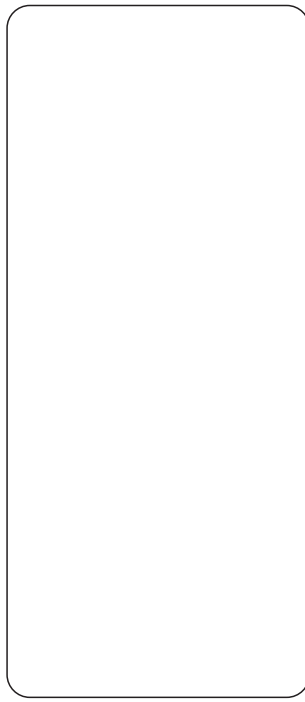
**H-0303 Pueblo nuevo signal box
H0 Scale (1:87)**

H-0303 Puesto de enclavamientos
Pueblo nuevo - escala H0 (1:87)

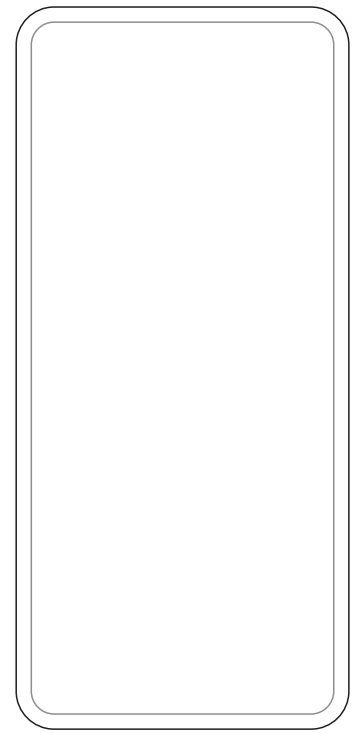


**H-0303 Pueblo nuevo signal box
component parts**

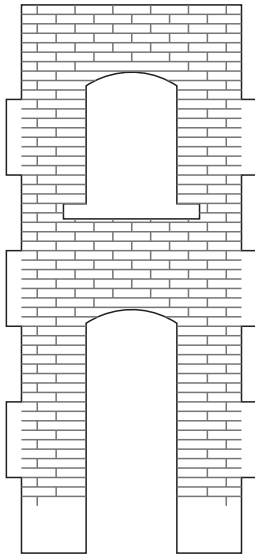
H-0303 Puesto de enclavamientos
Pueblo nuevo - despiece



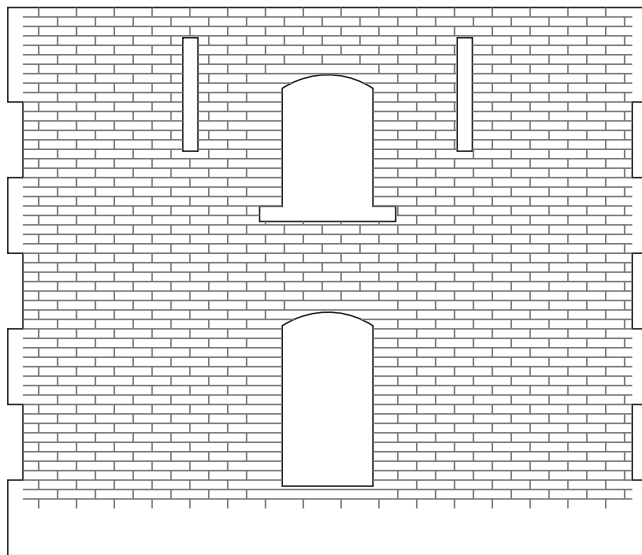
1



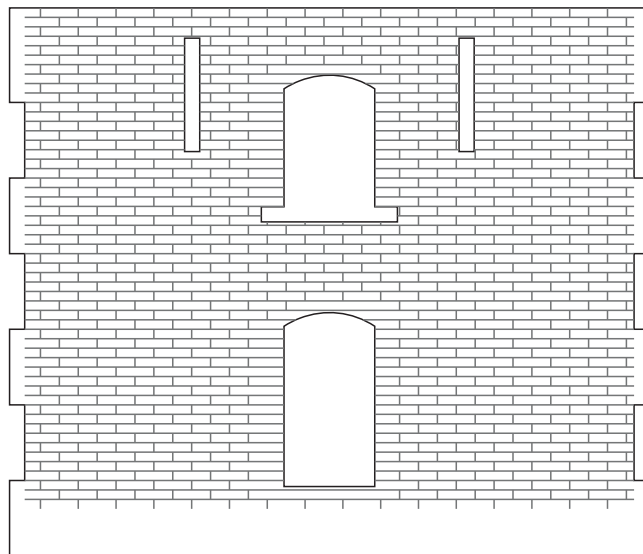
2



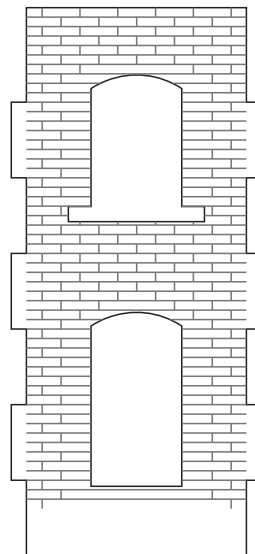
3



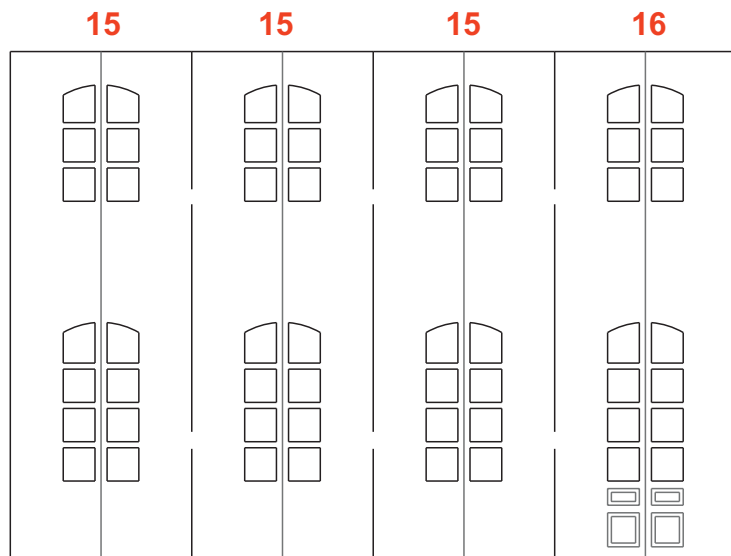
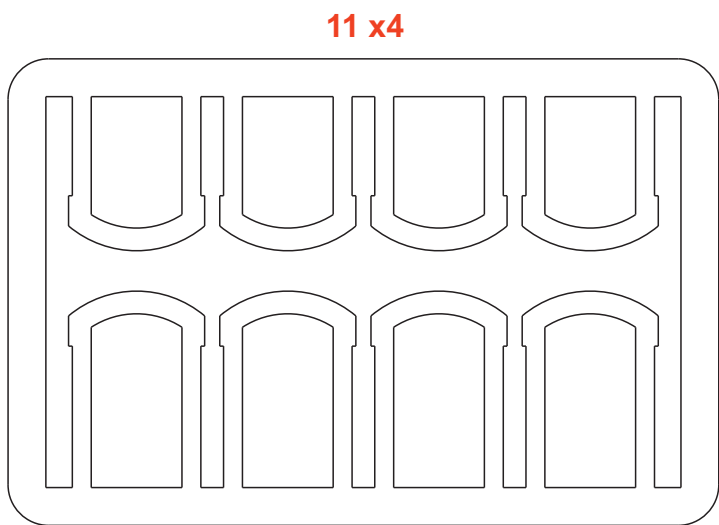
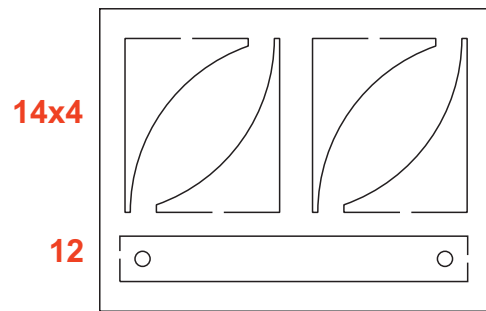
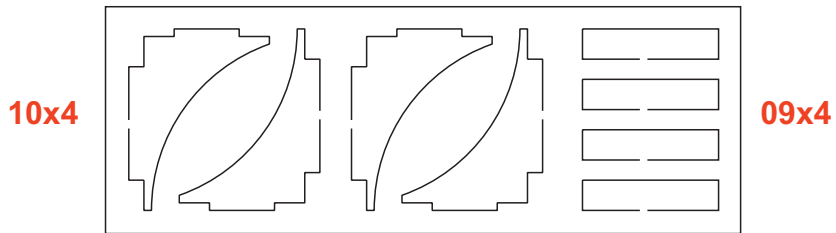
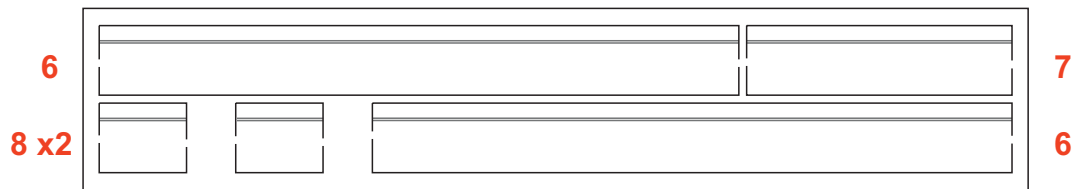
4



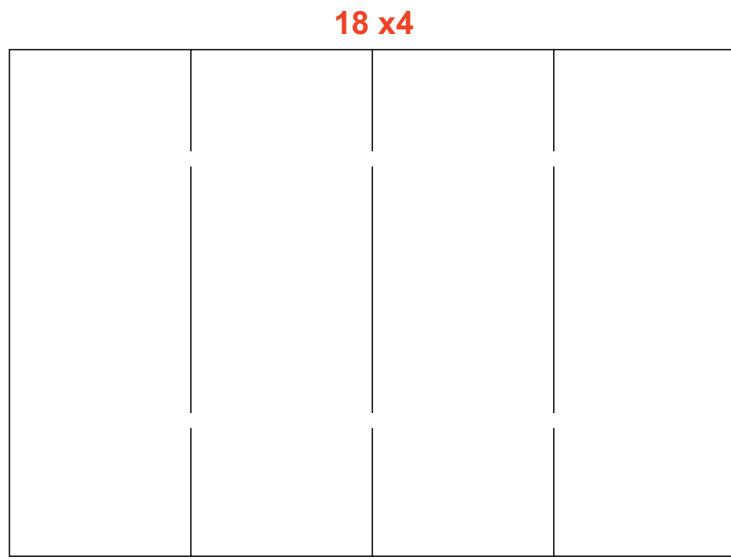
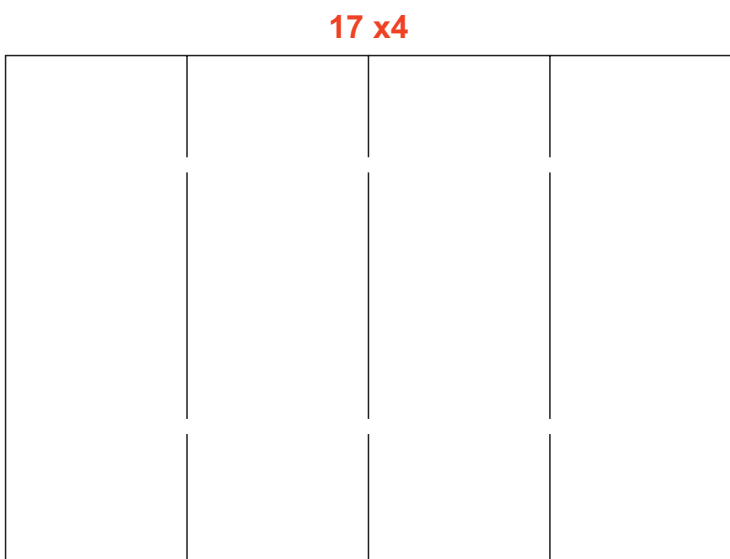
4



5

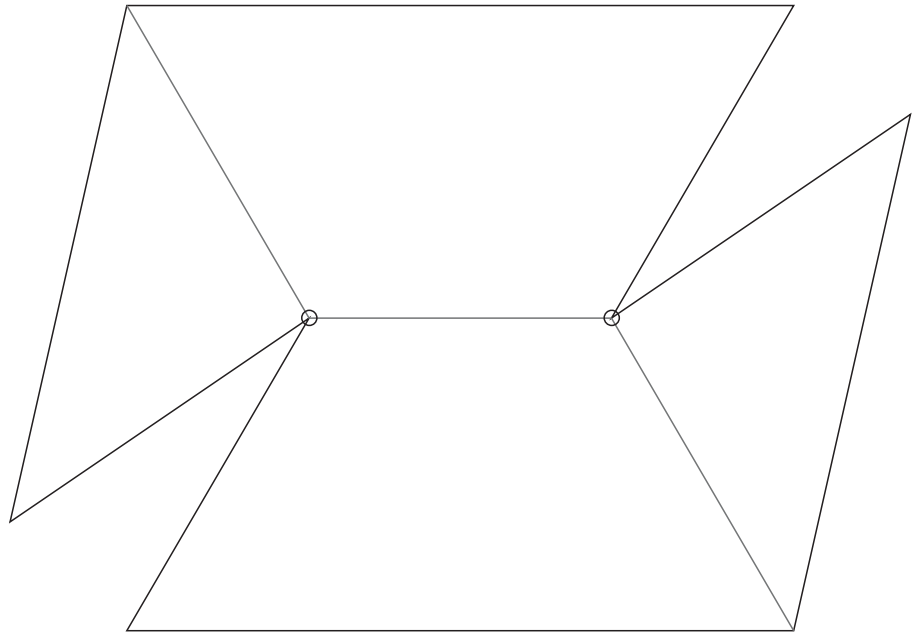
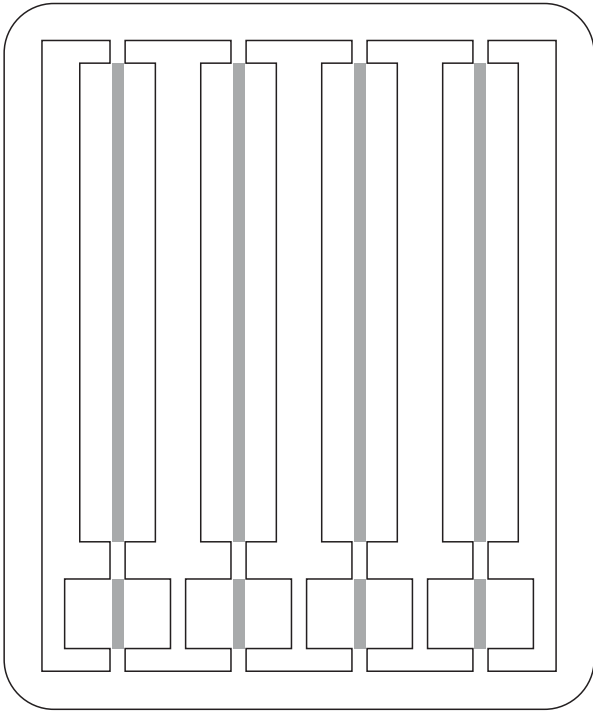


cartulina verde



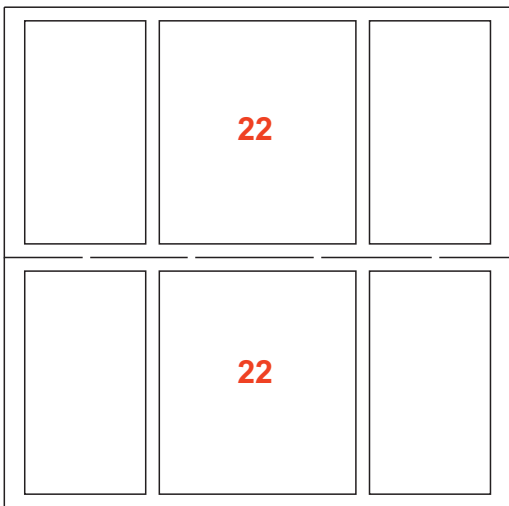
acetato trasparente

19 x4



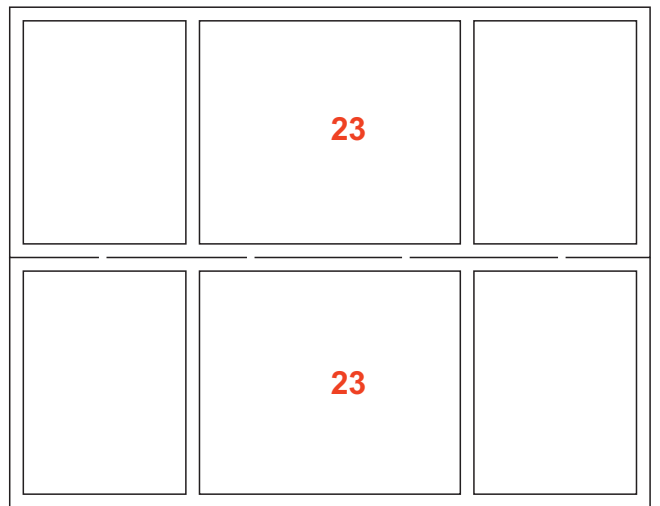
20

21 x4



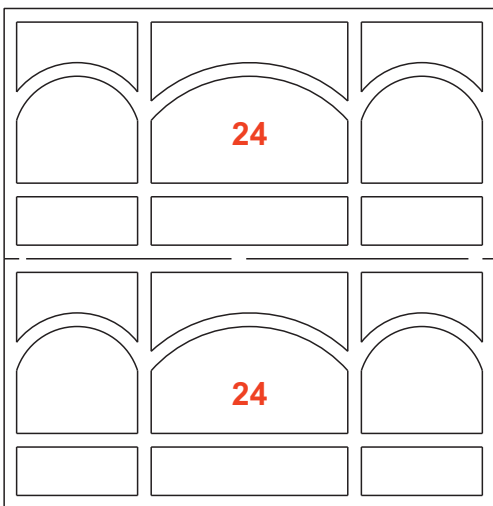
22

22



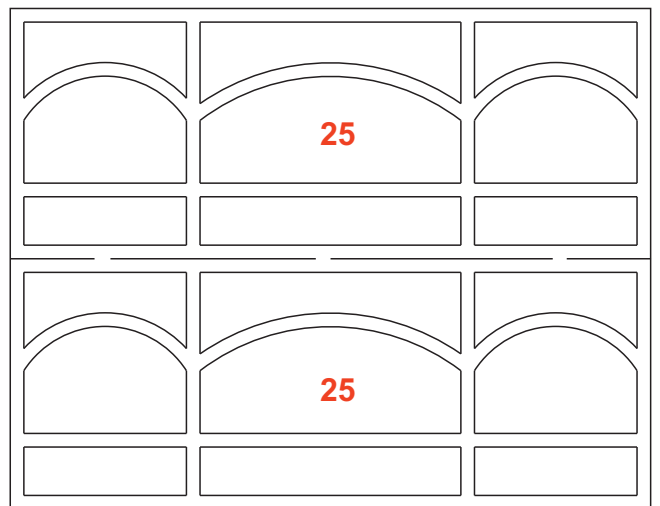
23

23



24

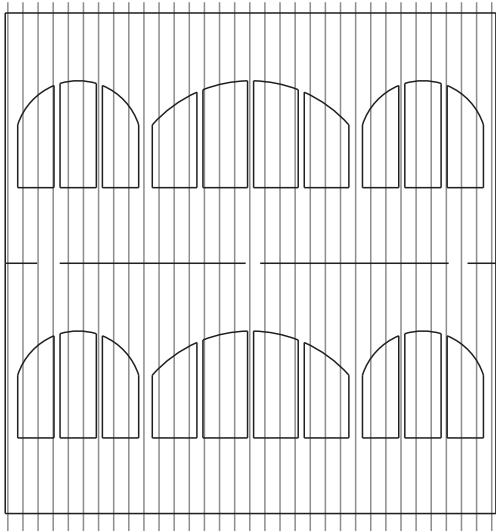
24



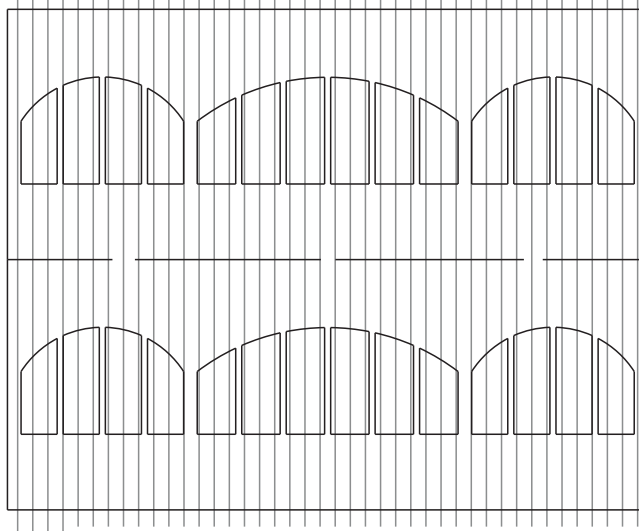
25

25

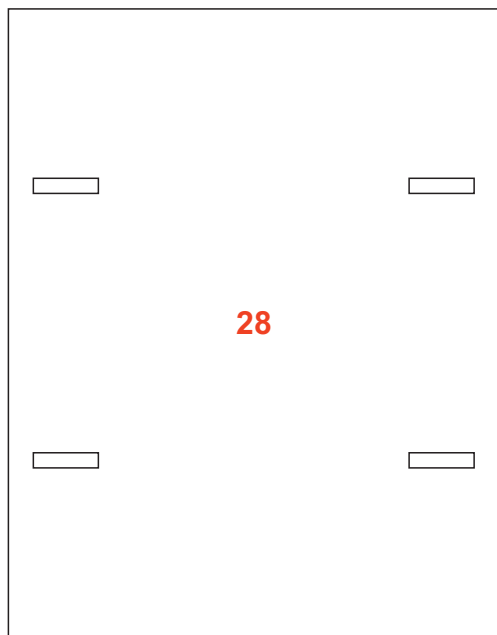
26
x2



27
x2



28



29

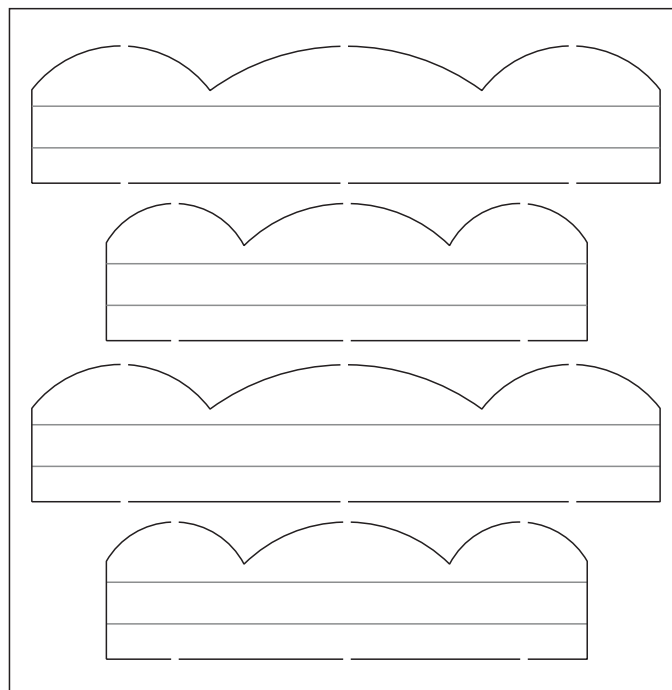


31

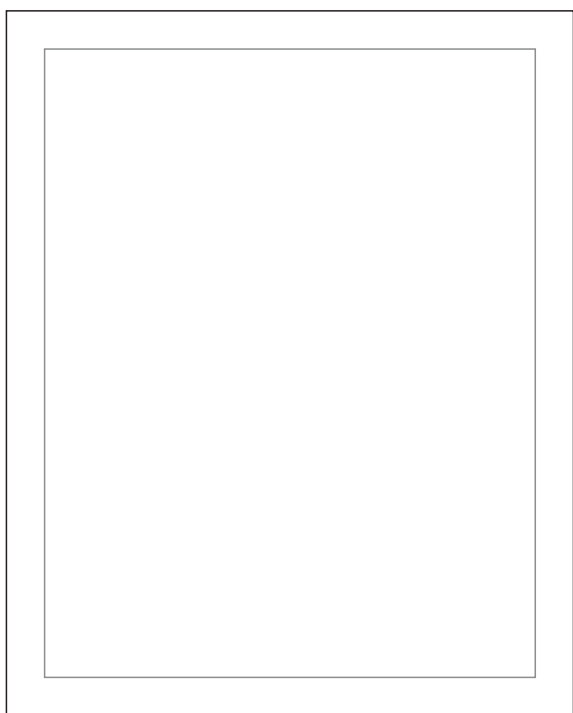
30

31

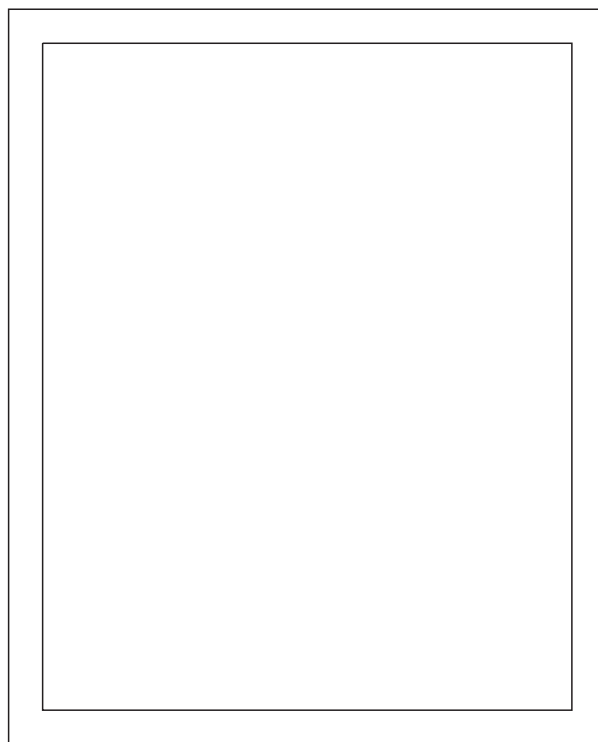
30



acetato transparente

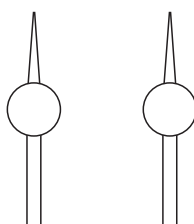


32



33

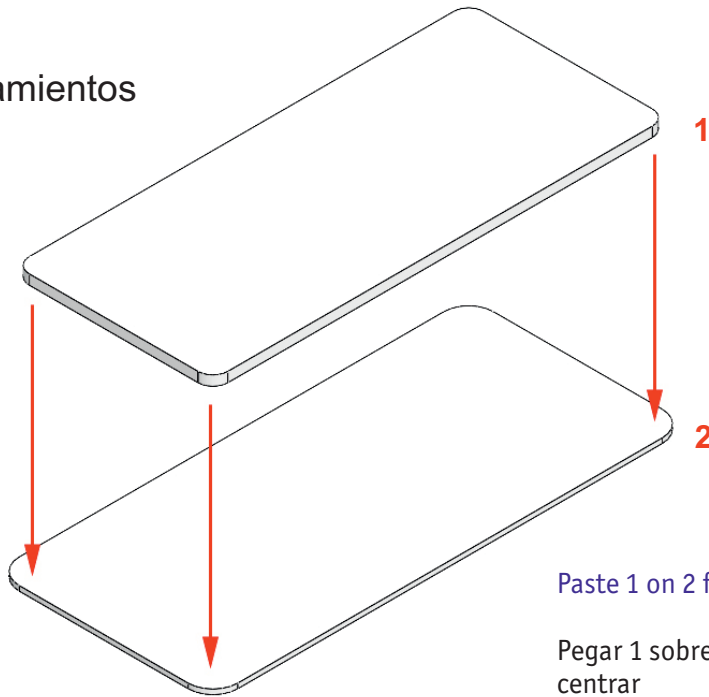
————— 34
cartulina negra



35 x 2

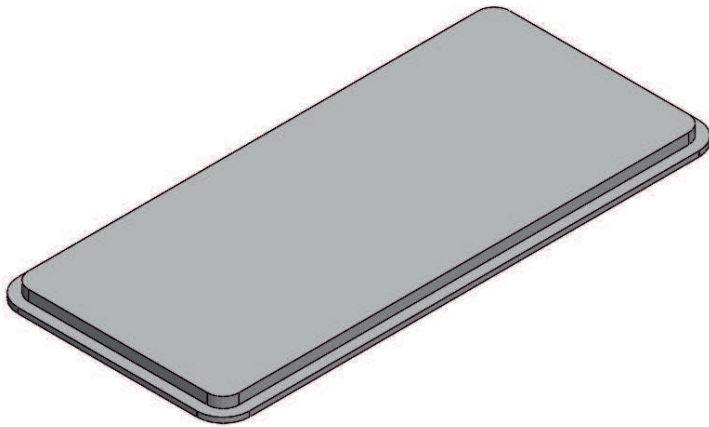
H-0303 Pueblo nuevo signal box assembly instructions

H-0303 Puesto de enclavamientos
Manual de montaje



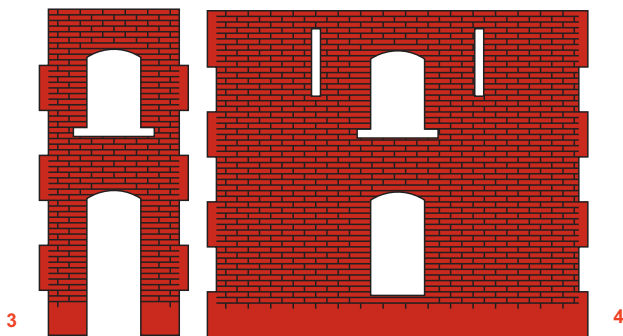
Paste 1 on 2 following the line to centre

Pegar 1 sobre 2 siguiendo la línea para centrar



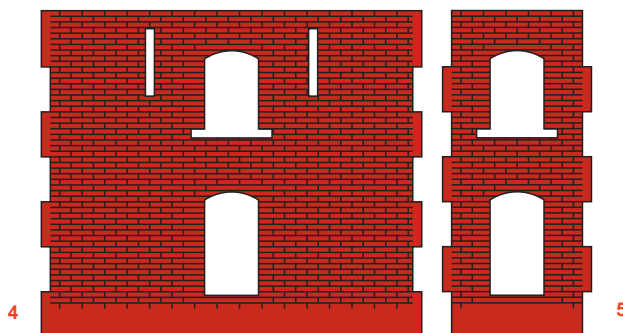
Paint in cement grey colour

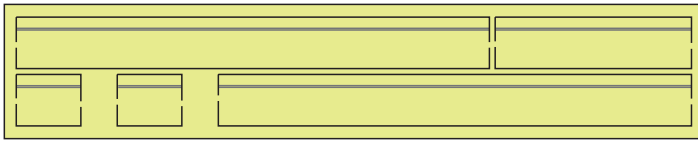
Pintar el conjunto de color gris cemento



Paint pieces 3, 4 and 5 in dark red

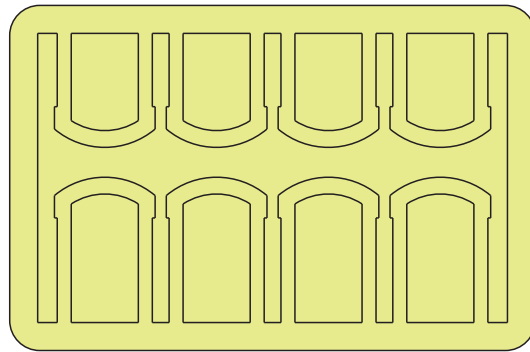
Pintar piezas 3, 4 y 5 de color rojo oscuro





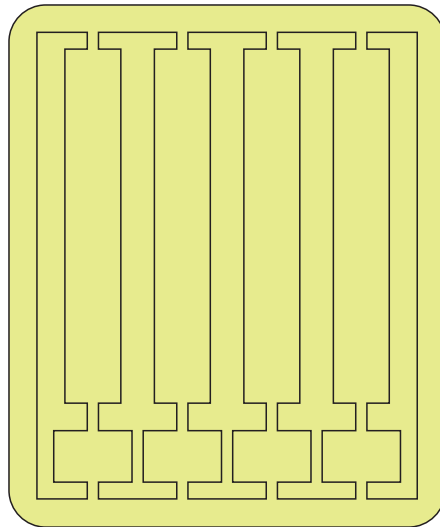
Paint this set in cream colour on the visible side, then remove the pieces and paint the upper edge

Pintar este conjunto de color crema por la cara visible, luego extraer las piezas y pintar el canto superior



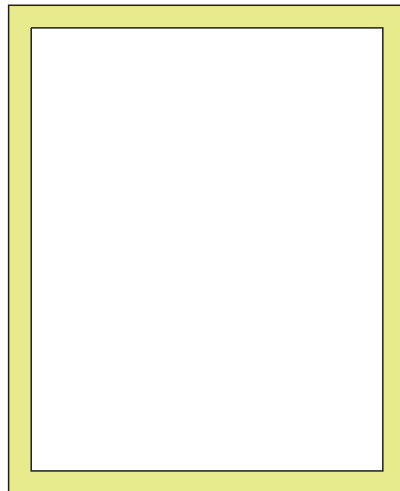
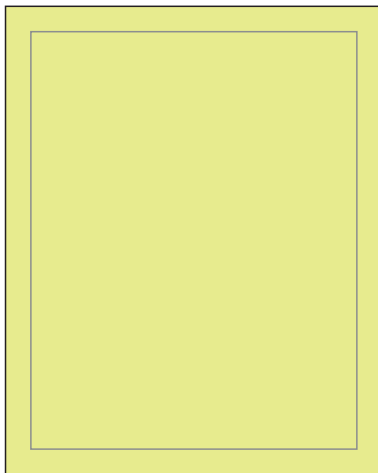
Paint this set in cream colour on the visible side.

Pintar este conjunto de color crema por la cara visible.



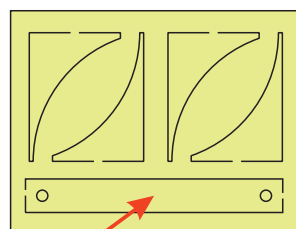
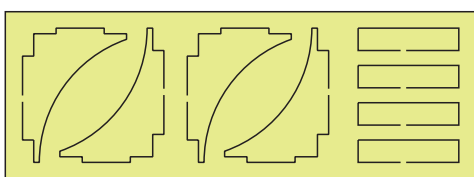
Paint this set in cream colour on the visible side. Attention, the face where you can see the crease for bending is the inner face

Pintar este conjunto de color crema por la cara visible. Atención, la cara donde se aprecia el hendido para doblar es la cara no visible



Paint these two pieces in cream colour on both sides. Then rework the outside edge.

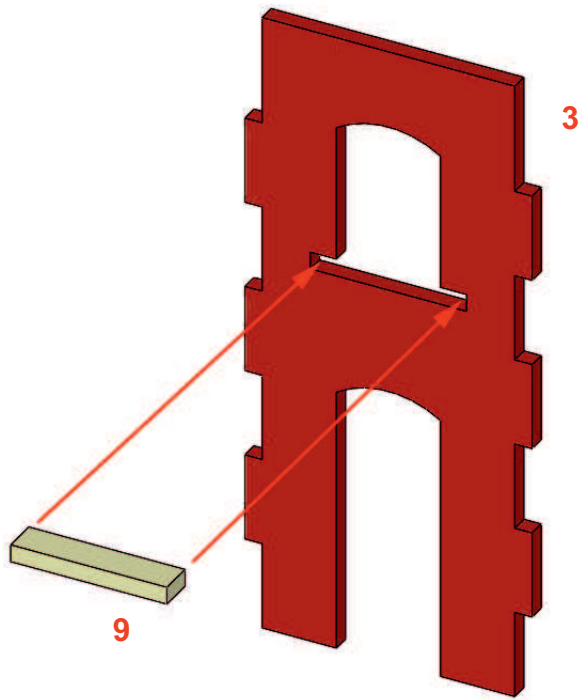
Pintar estas dos piezas de color crema por ambas caras. Luego reparar el canto exterior.



Paint these two sets in cream colour on both sides. Then remove the pieces and retouch the visible edges.

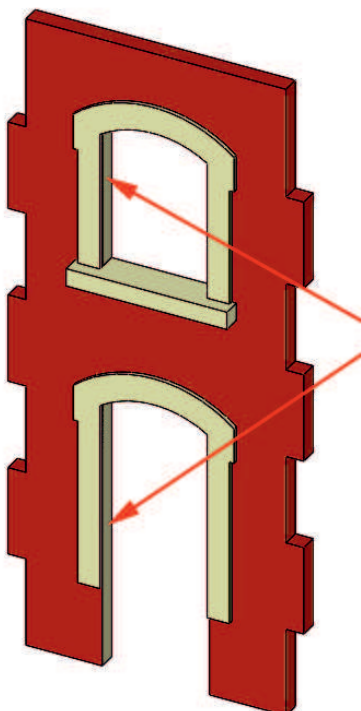
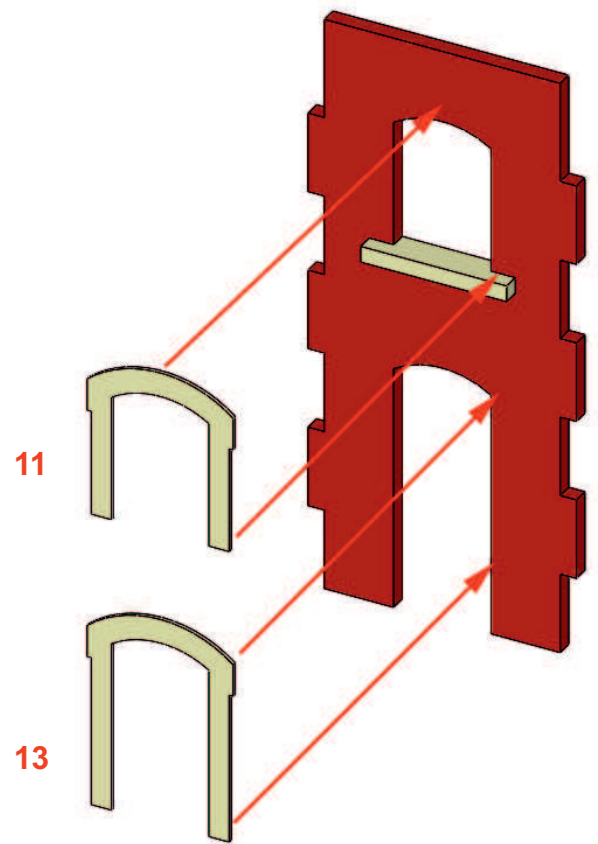
Pintar estos dos conjuntos de color crema por ambas caras. Luego extraer las piezas y reparar los cantos visibles.

It is not necessary to paint this piece, as it is not visible
No es necesario pintar esta pieza, ya que no es visible



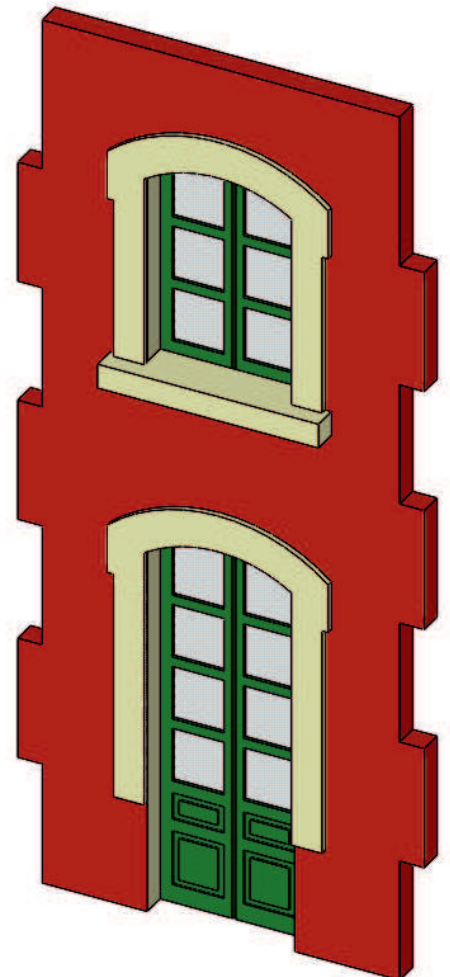
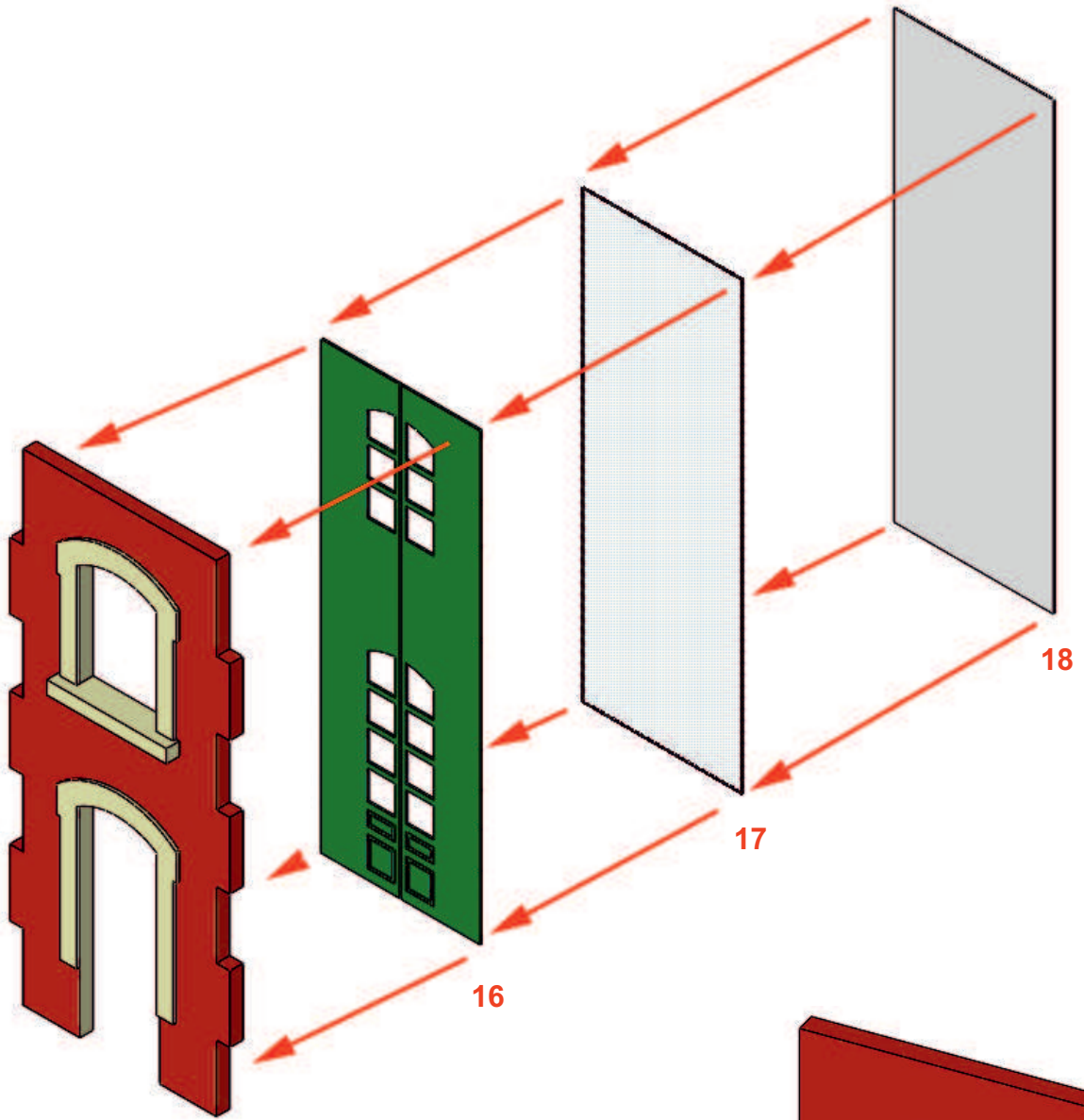
Paste by adjusting on the inside of the façade

Pegar enrasado por el interior de la fachada

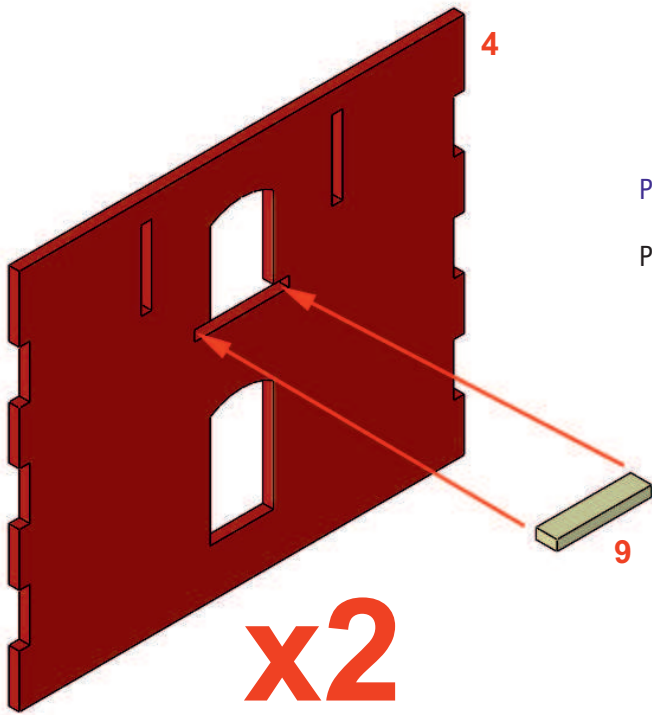


Now paint the inside edges of the door and window with a brush.
Use the same cream colour for the frames and the shelf.

Pintar ahora a pincel los cantos interiores de puerta y ventana.
Usar el mismo color crema de los marcos y la repisa.

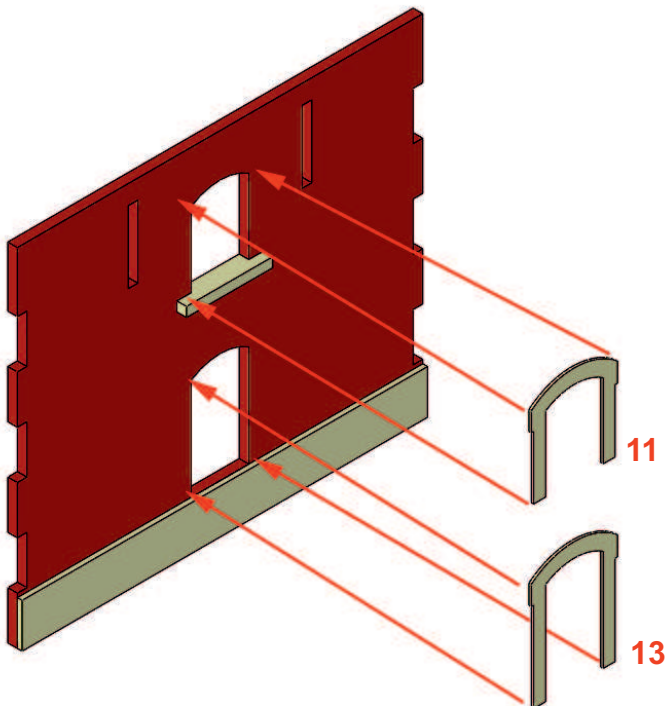
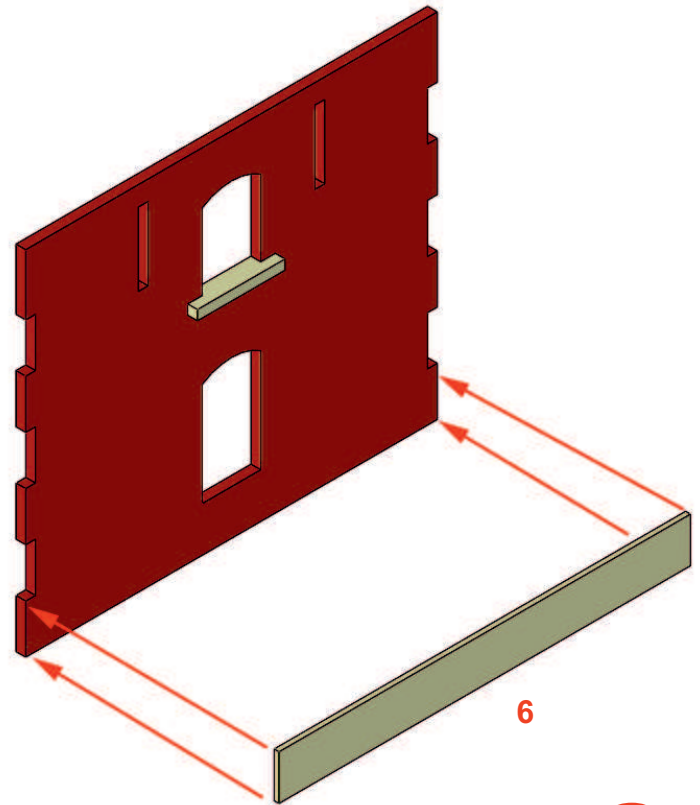


Finished facade
Fachada terminada



Paste by adjusting on the inside of the façade

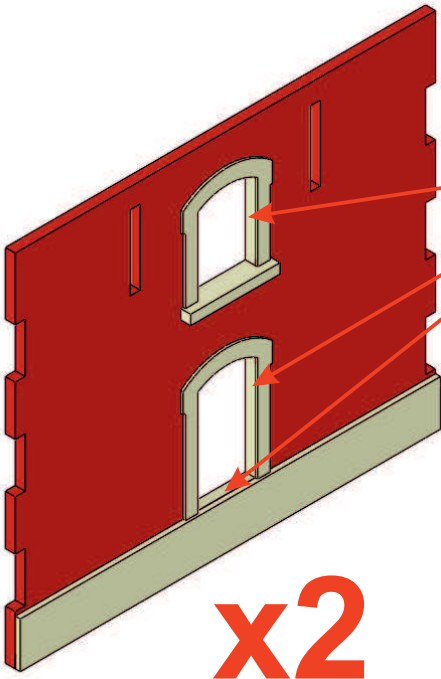
Pegar enrasado por el interior de la fachada



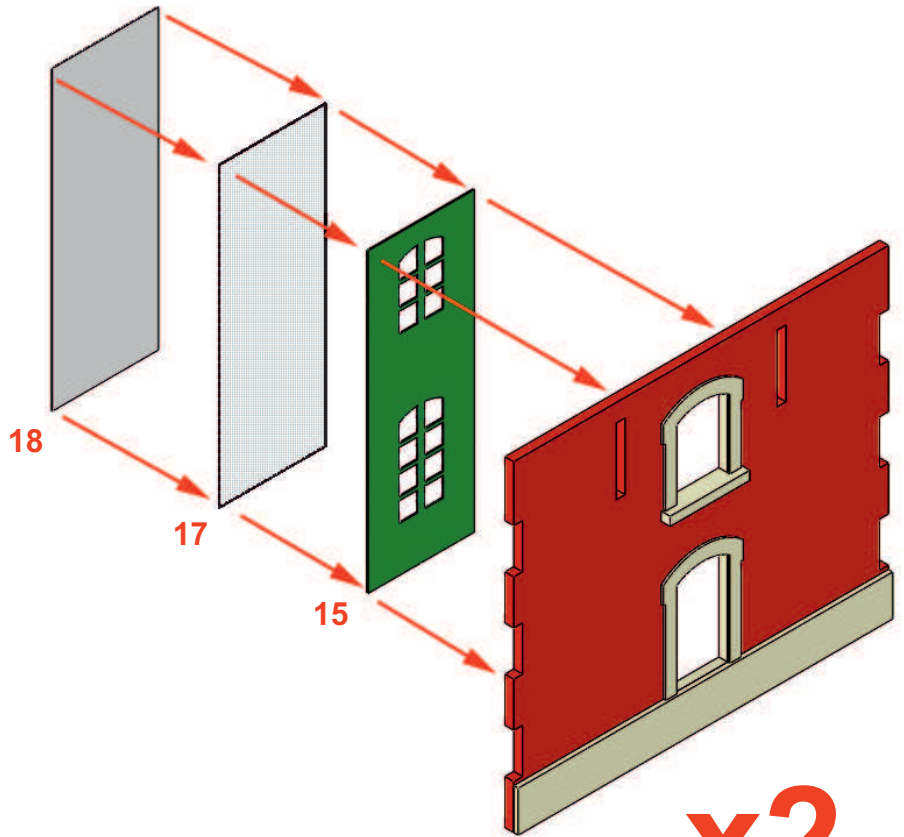
x2

Now paint the inside edges of the door and window with a brush. Use the same cream colour for the frames and the shelf.

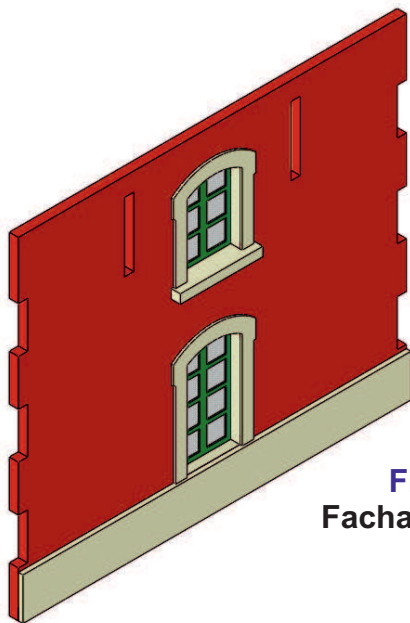
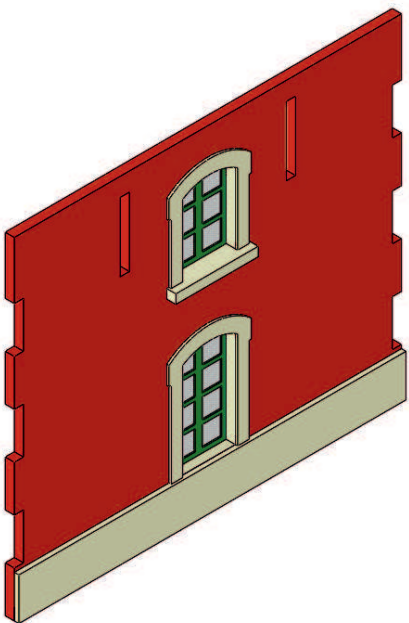
Pintar ahora a pincel los cantos interiores de puerta y ventana. Usar el mismo color crema de los marcos y la repisa.



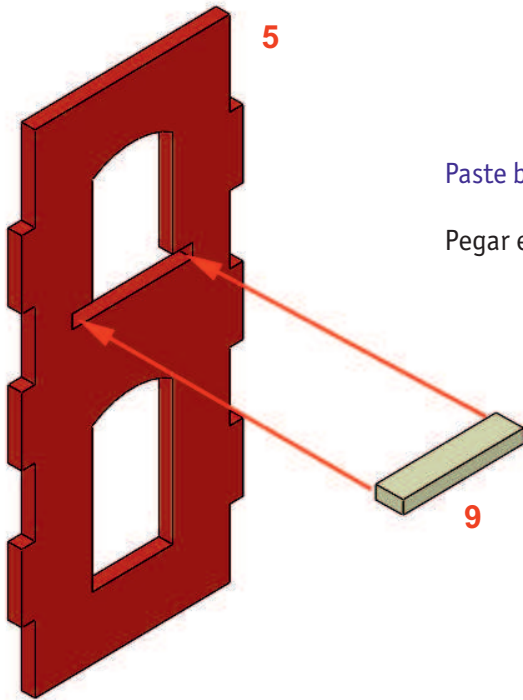
x2



x2



Finished facades
Fachadas terminadas

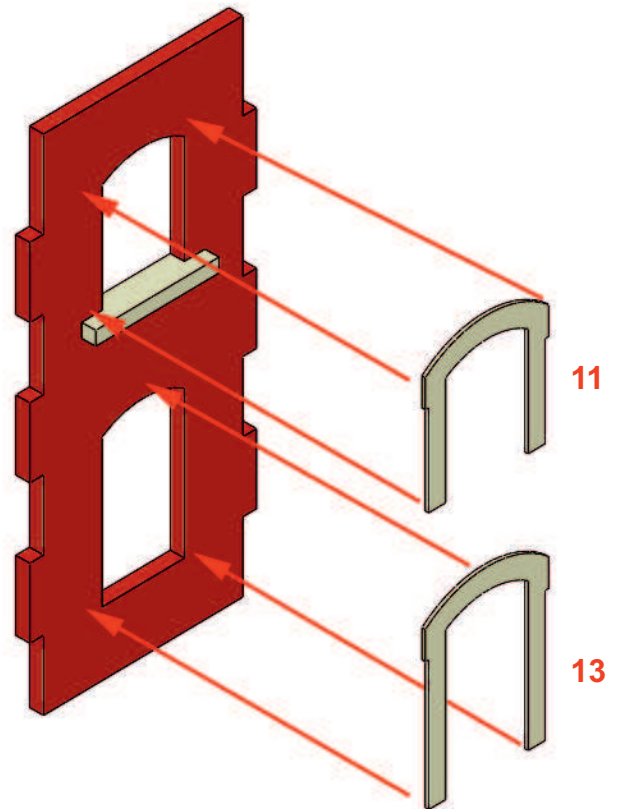


5

Paste by adjusting on the inside of the façade

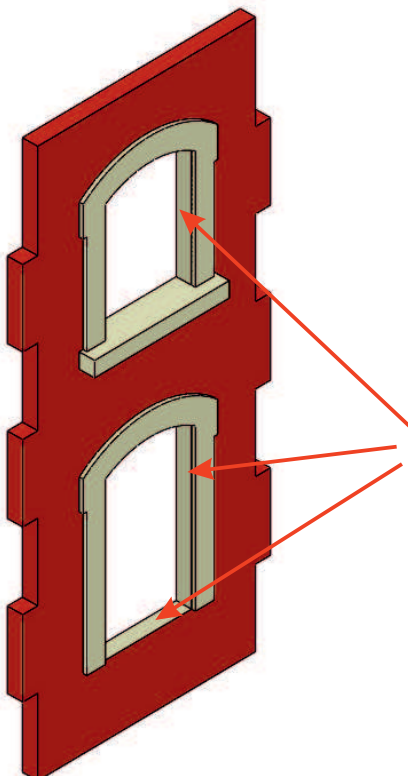
Pegar enrasado por el interior de la fachada

9



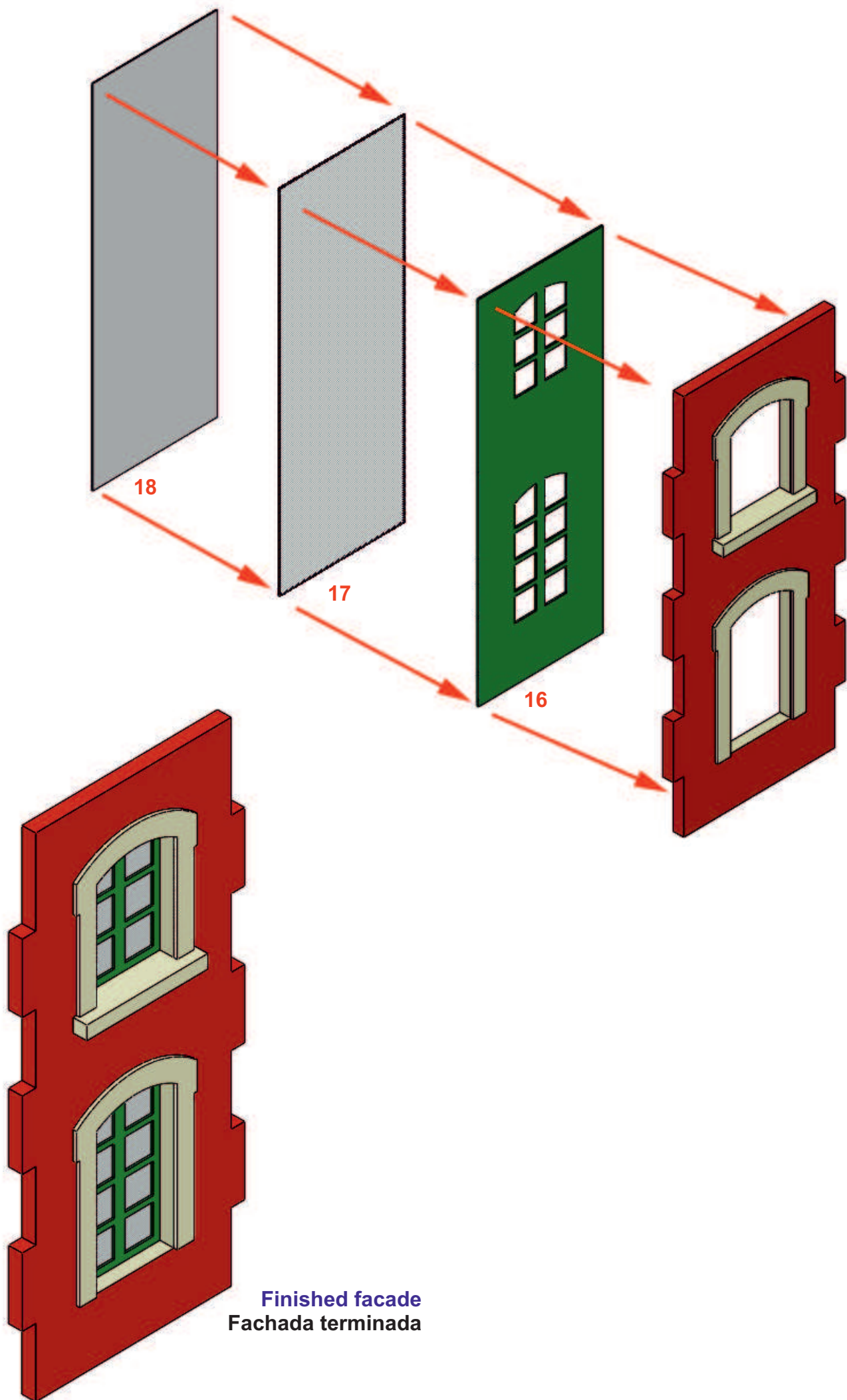
11

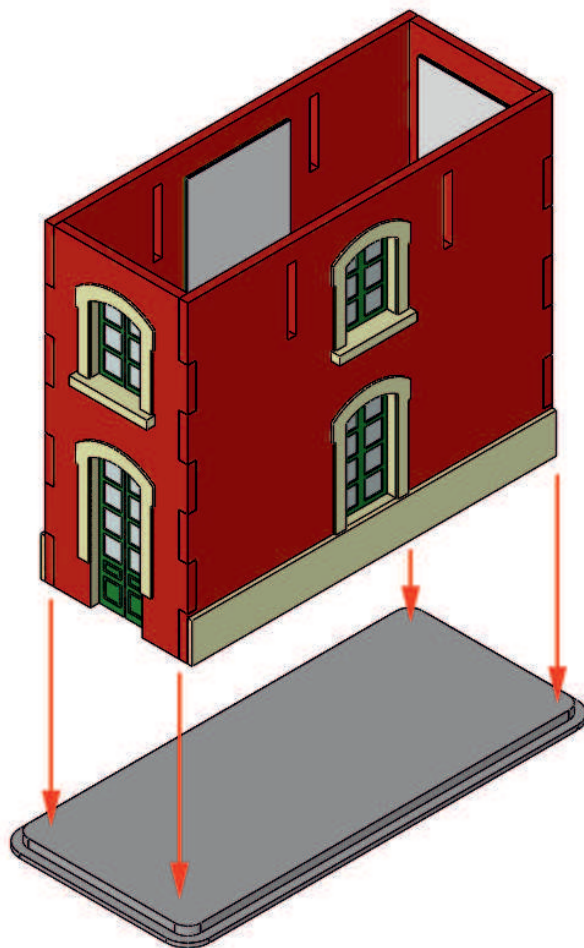
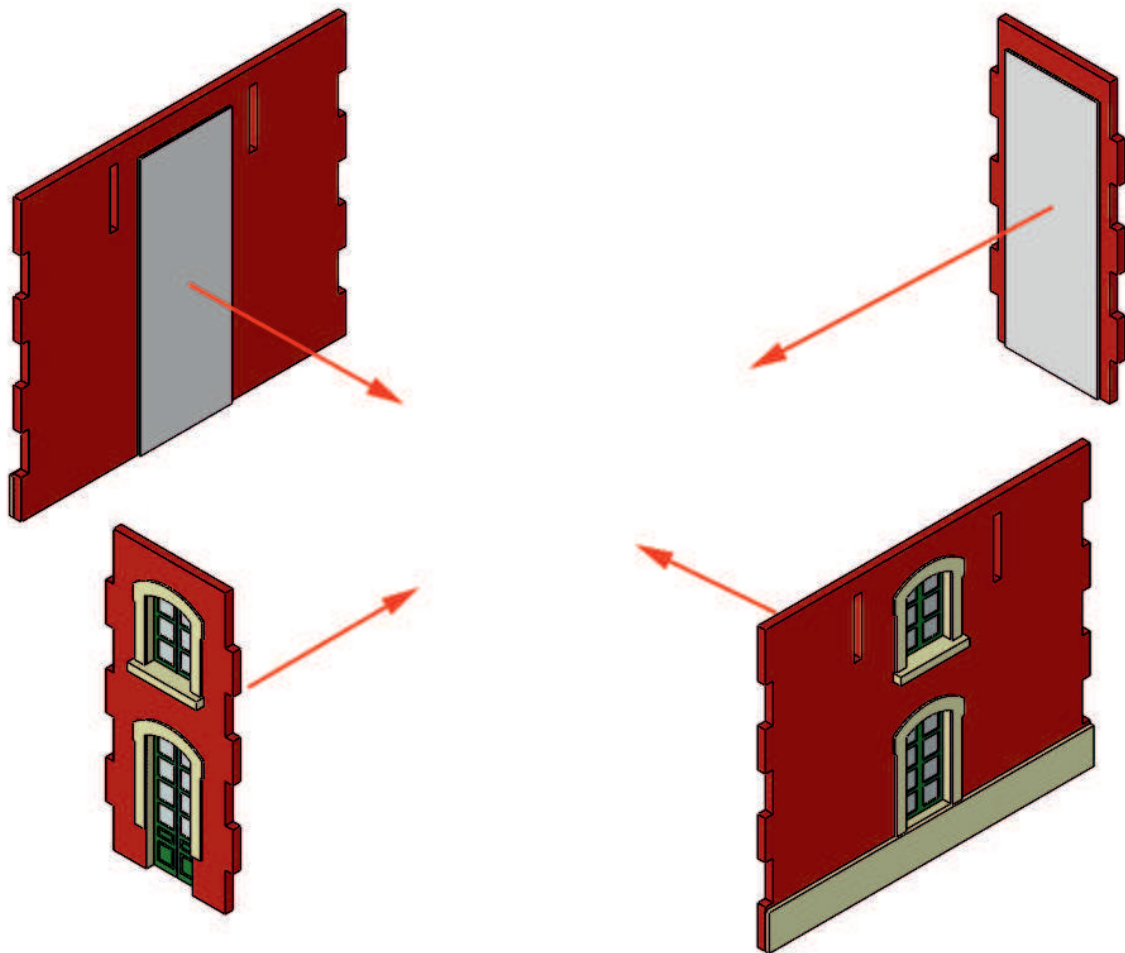
13

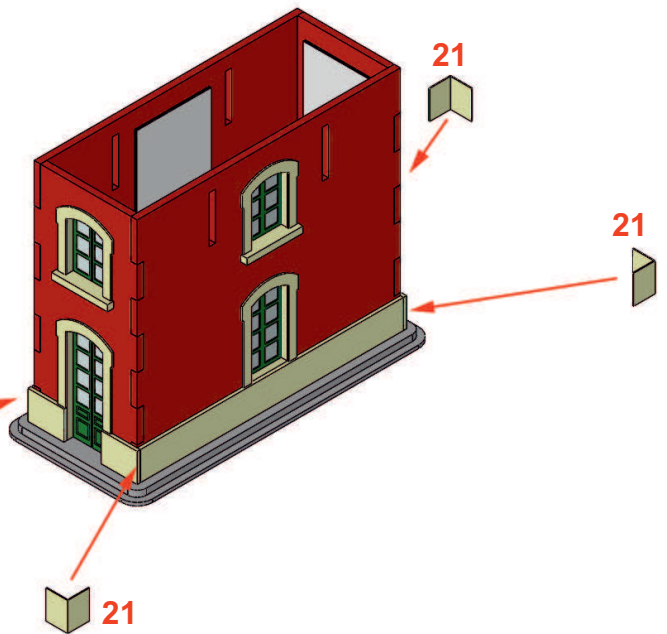
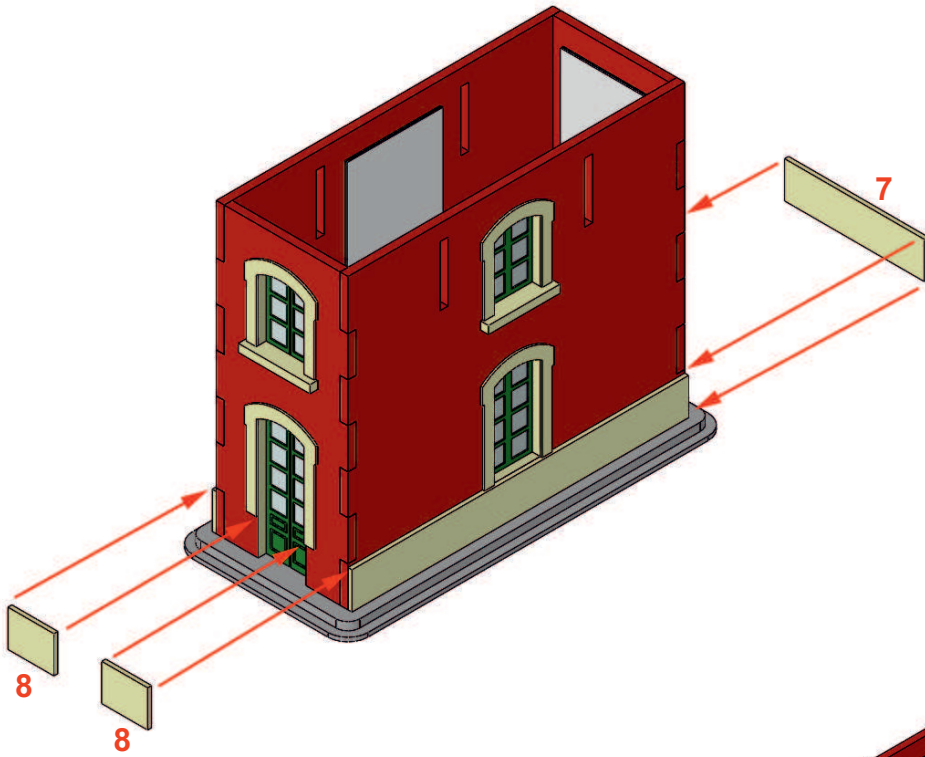


Now paint the inside edges of the door and window with a brush.
Use the same cream colour for the frames and the shelf.

Pintar ahora a pincel los cantos interiores de puerta y ventana.
Usar el mismo color crema de los marcos y la repisa.

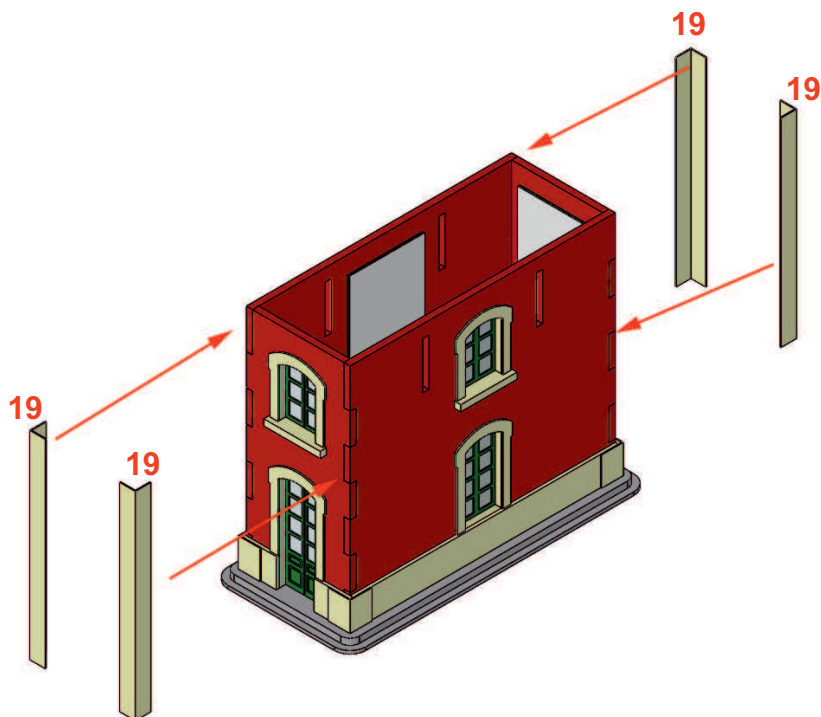






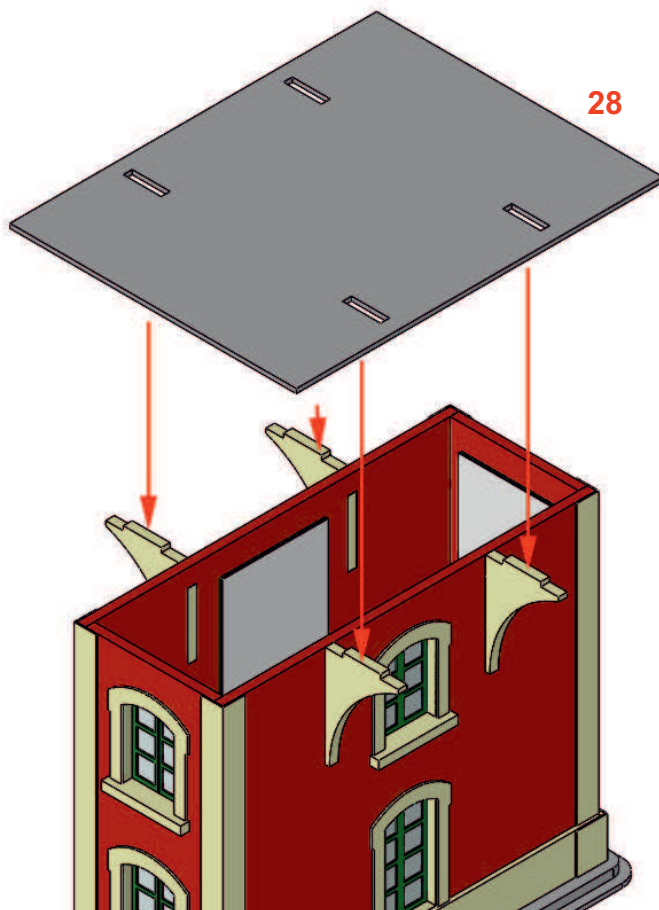
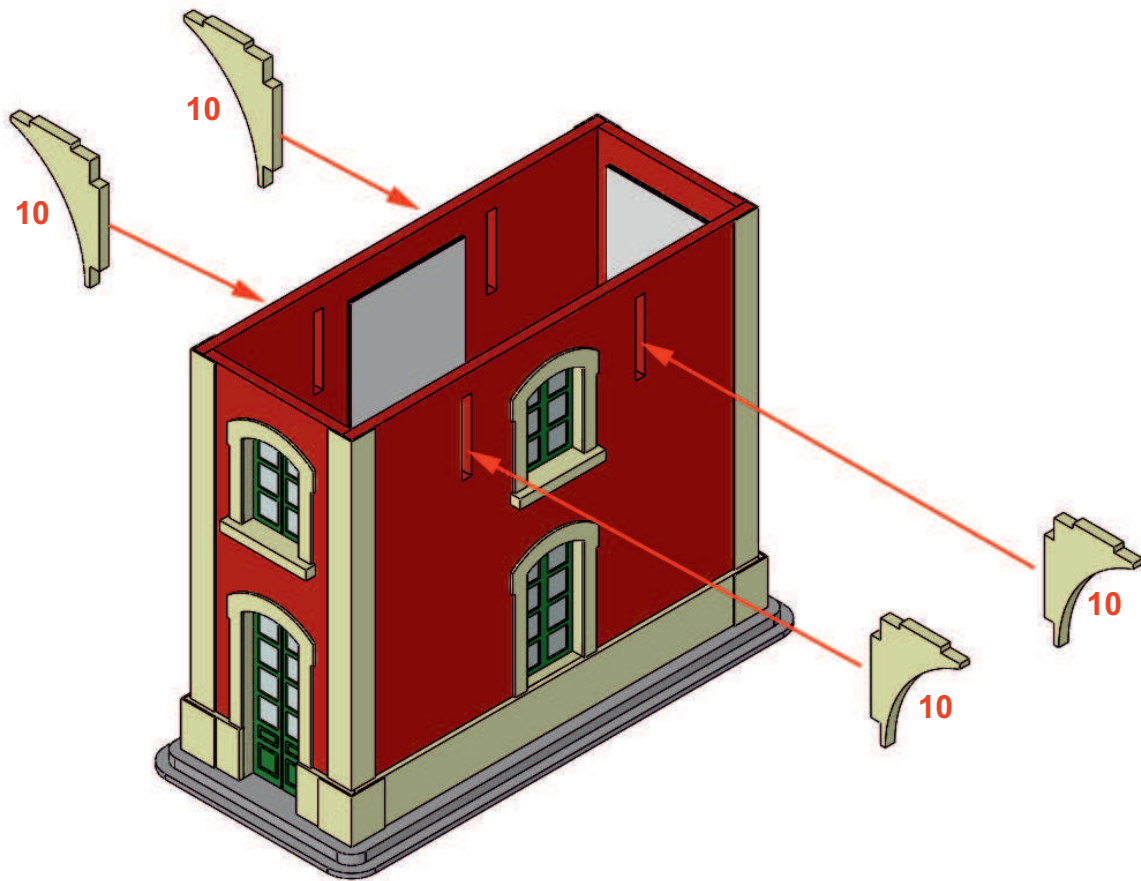
Fold the pieces 21 as shown in the graph. The mark for folding on the inside.

Doblar las piezas 21 según muestra el gráfico. El hendido por el interior.



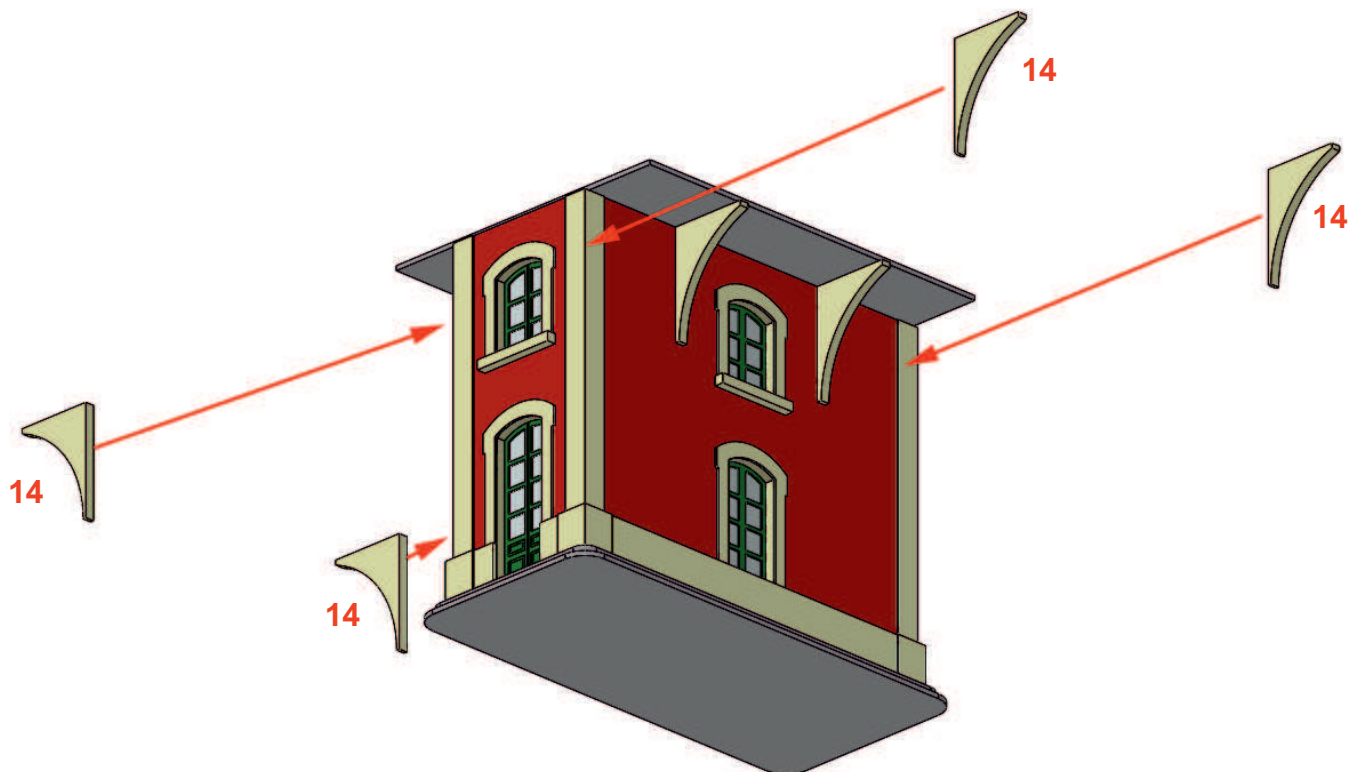
Fold the pieces 19 as shown in the graph. The mark for folding on the inside.

Doblar las piezas 19 según muestra el gráfico. El hendido por el interior.



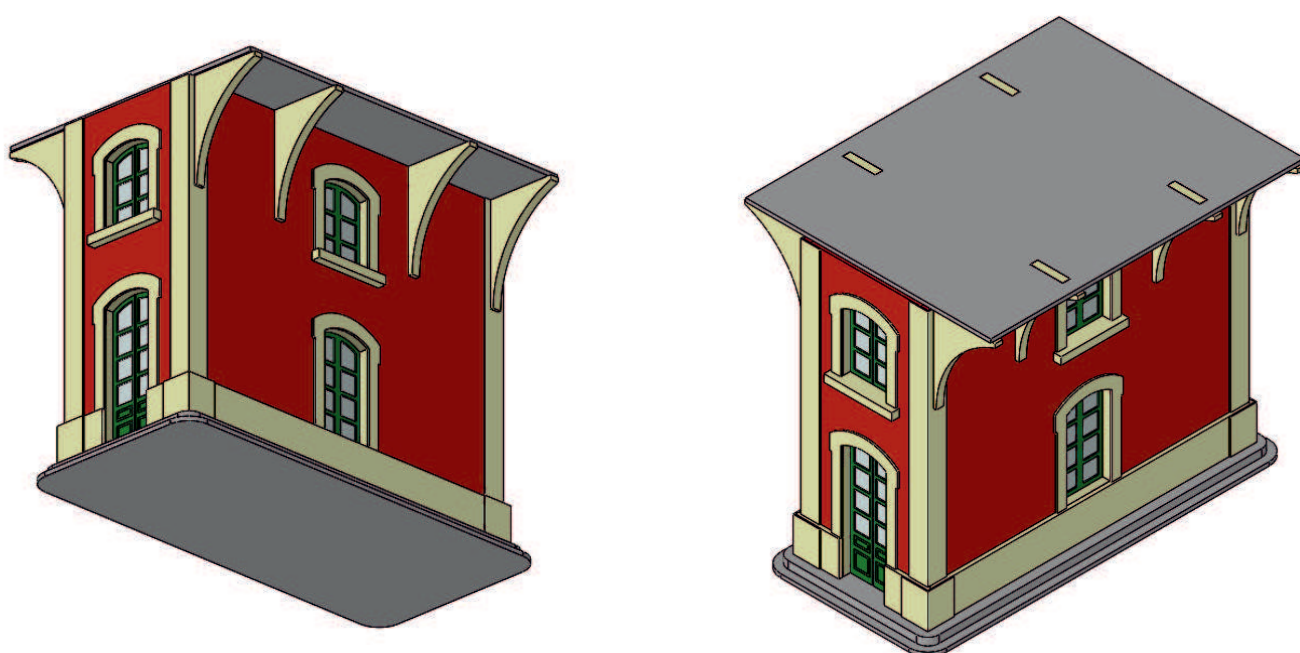
Paint piece 28 before gluing.
 On the lower side cream coloured like
 the rest of the trims,
 and on the upper side in the desired
 colour for the cabin floor.

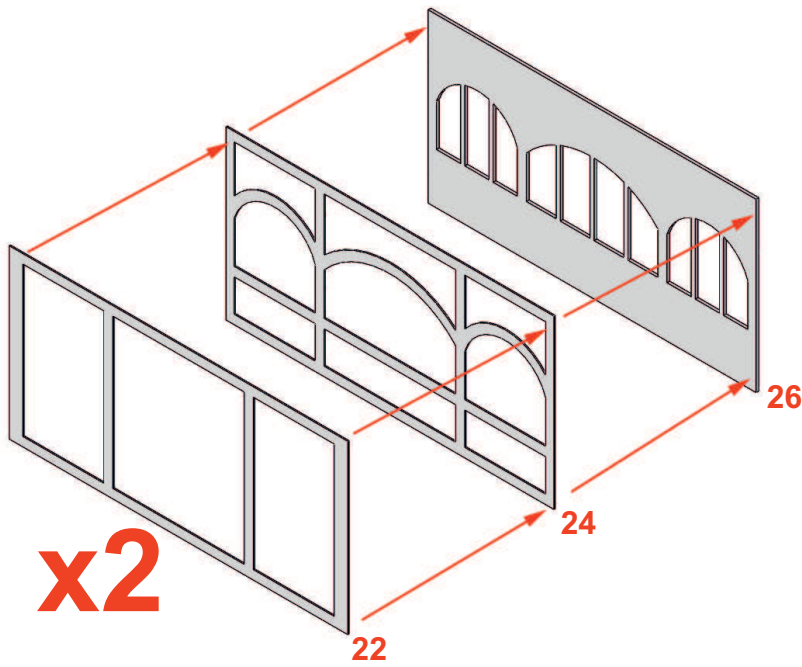
Pintar la pieza 28 antes de pegar.
 Por el lado inferior de color crema como
 el resto de remates,
 y por el lado superior del color deseado
 para el pavimento de la cabina.



After gluing the roof 28, glue the 4 supports number 14 as shown in the graphic.
The final aspect must be as shown in the two lower graphics

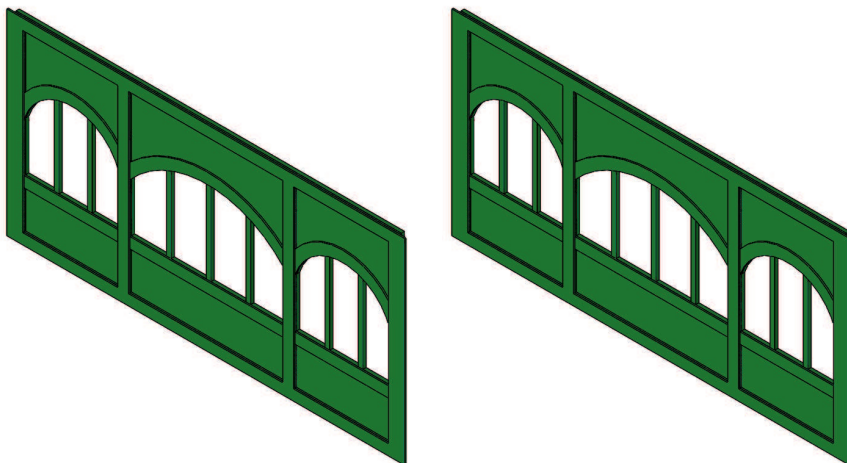
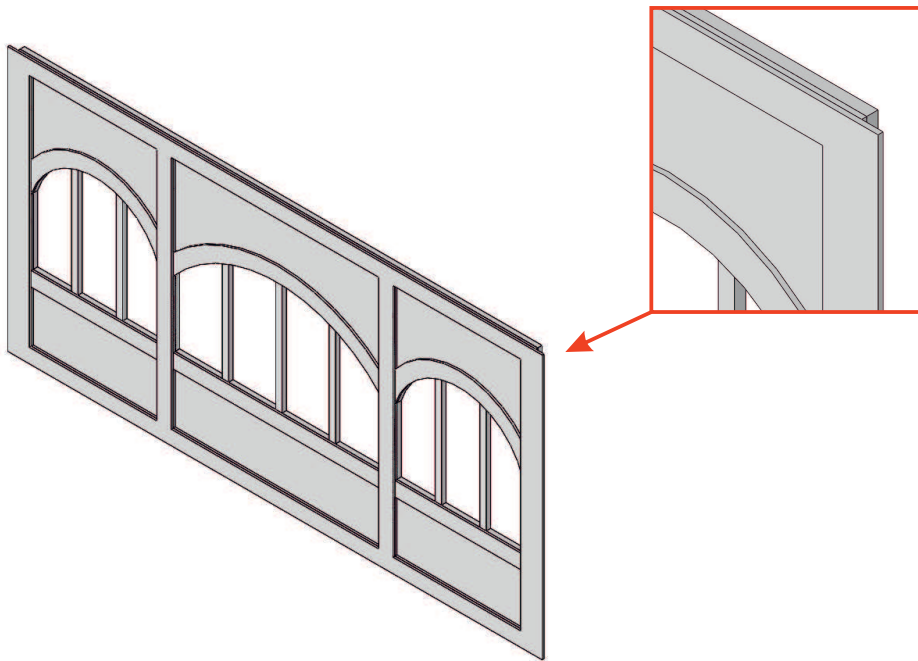
Después de pegar el techo 28, pegar los 4 soportes números 14 tal como indica el gráfico.
El aspecto final debe ser como el que se aprecia en los dos gráficos inferiores





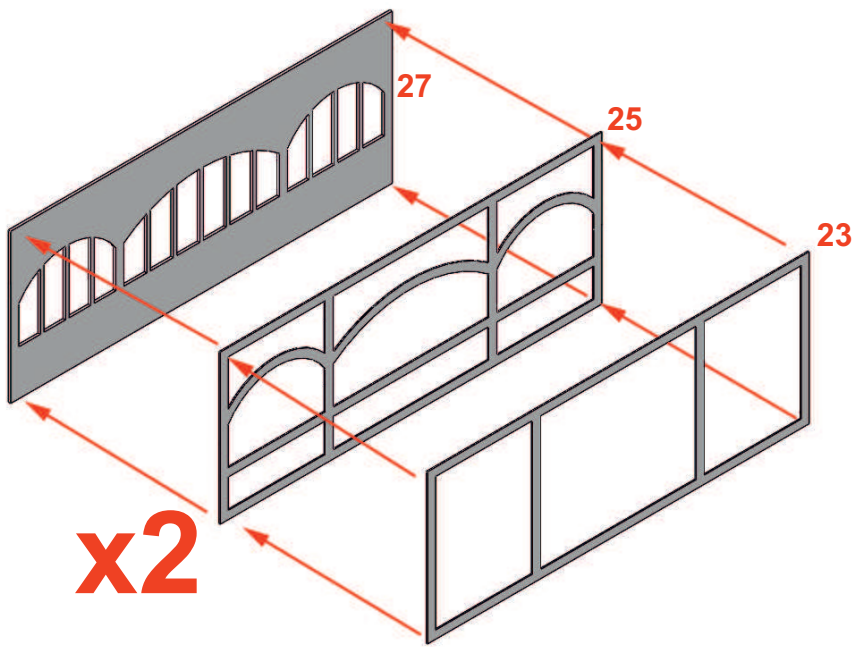
Paste the three pieces on top of each other so that the final appearance is that of the lower graphic.
Pay attention to the placement of the ends, see enlarged detail

Pegar las tres piezas una sobre la otra de manera que el aspecto final sea el del gráfico inferior.
Atención a la colocación de los extremos, ver detalle ampliado



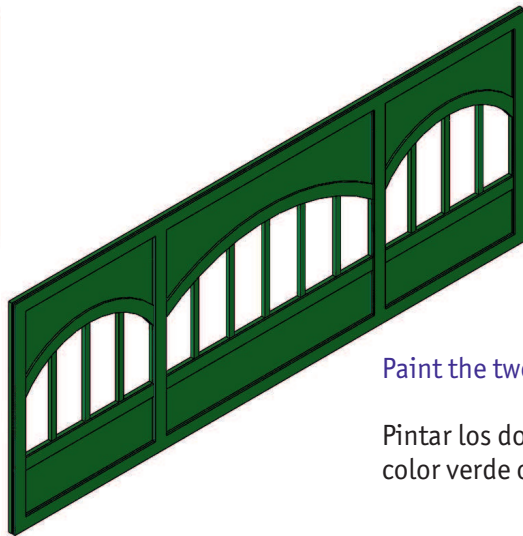
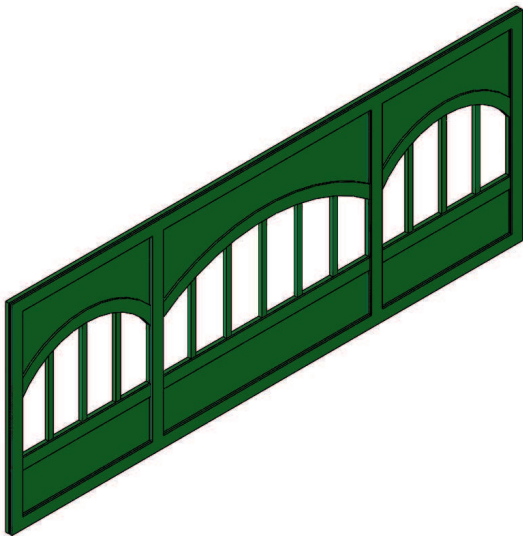
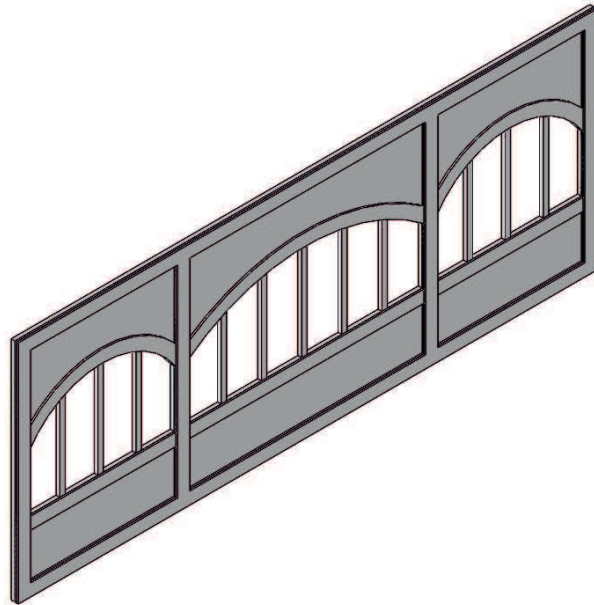
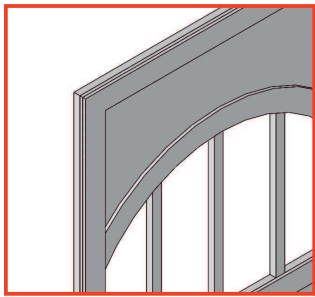
Paint the two sets dark green.

Pintar los dos conjuntos de color verde oscuro.



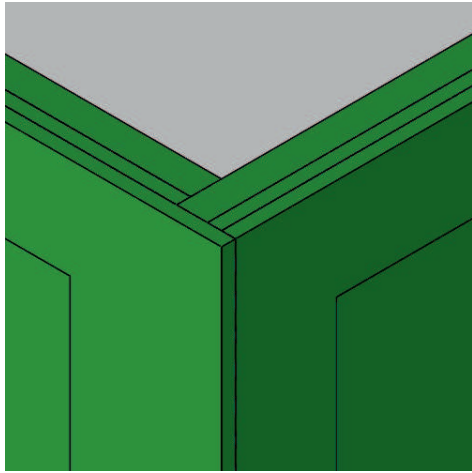
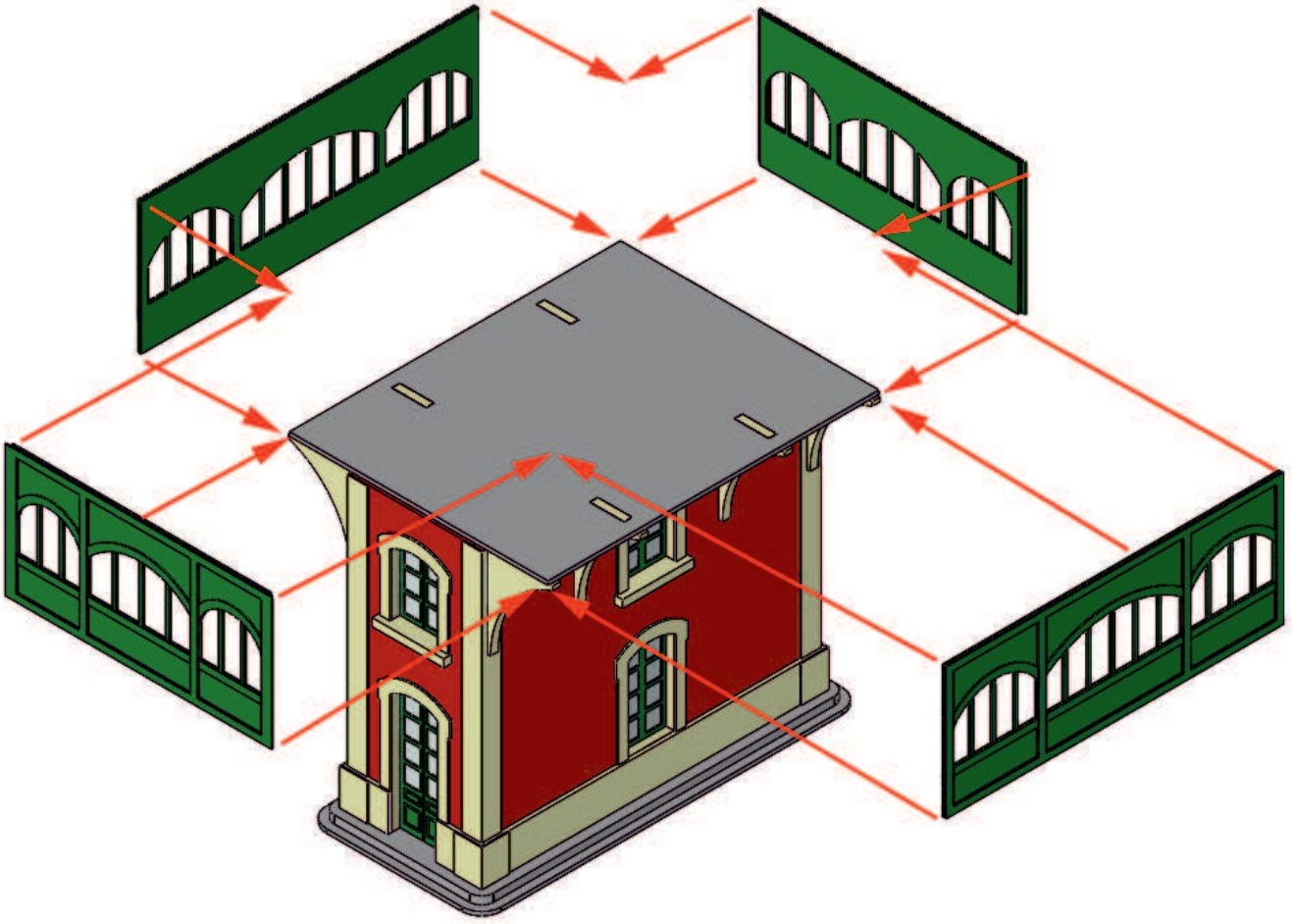
Paste the three pieces on top of each other so that the final appearance is that of the lower graphic. Pay attention to the placement of the ends, see enlarged detail

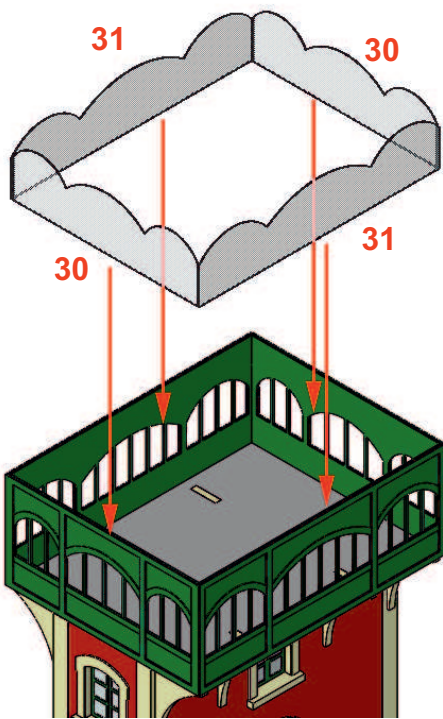
Pegar las tres piezas una sobre la otra de manera que el aspecto final sea el del gráfico inferior. Atención a la colocación de los extremos, ver detalle ampliado



Paint the two sets dark green.

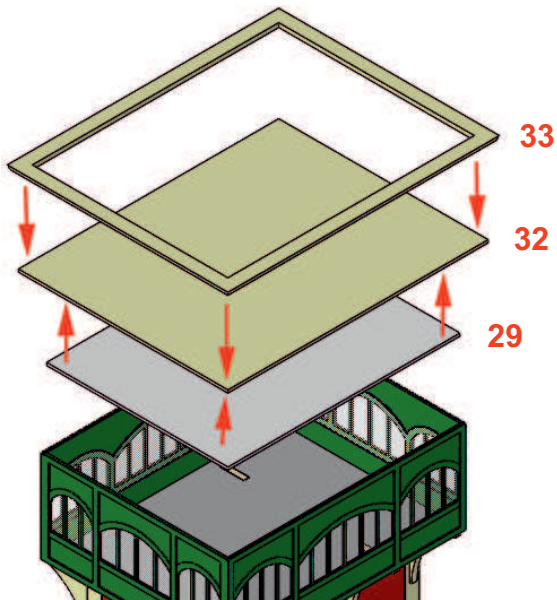
Pintar los dos conjuntos de color verde oscuro.





When gluing the crystals, be careful with excess glue so as not to darken the acetate.

Al pegar los cristales, tener cuidado con el exceso de pegamento para no oscurecer el acetato.

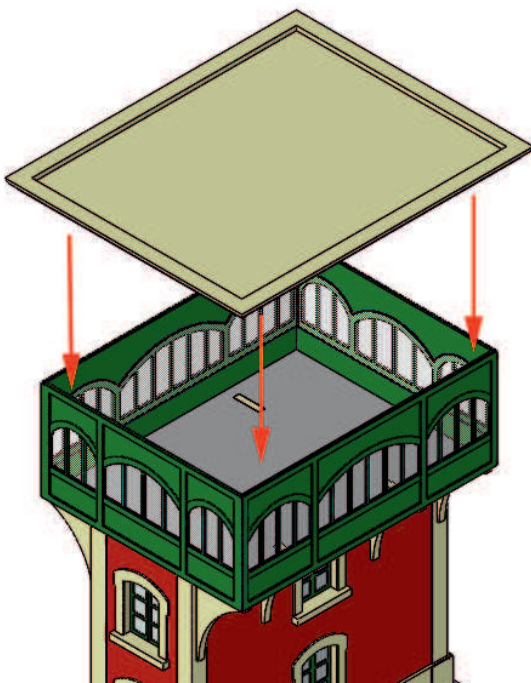


Glue the three pieces centred on each other as shown in the graph.

It is not necessary to paint piece 29 as the white for the cabin roof is correct.

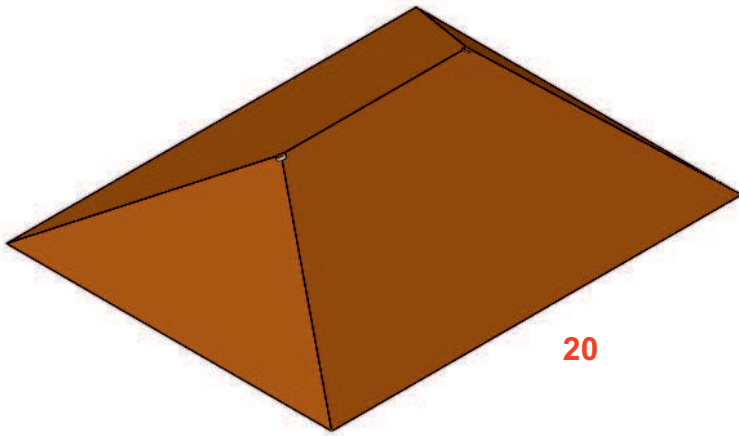
Pegar las tres piezas centradas entre sí según muestra el gráfico.

No es necesario pintar la pieza 29 ya que el blanco para el techo de la cabina es correcto.



When joining this set to the rest of the tower, bear in mind that piece 29 is inserted inside the cabin to keep the green walls completely vertical.

Al unir este conjunto al resto de la torre, tener en cuenta que la pieza 29 se introduce en el interior de la cabina para mantener las paredes verdes totalmente verticales.

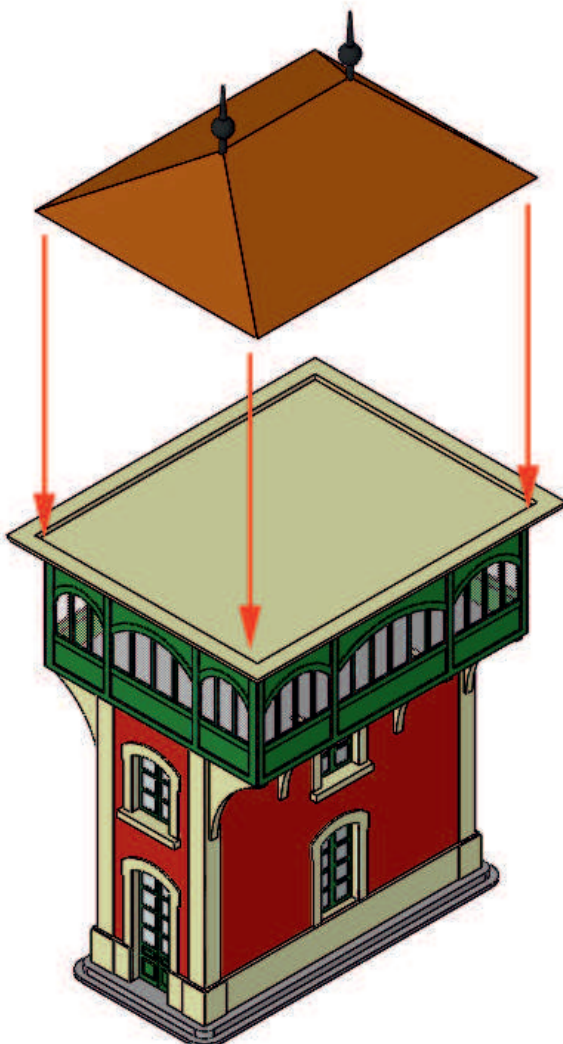
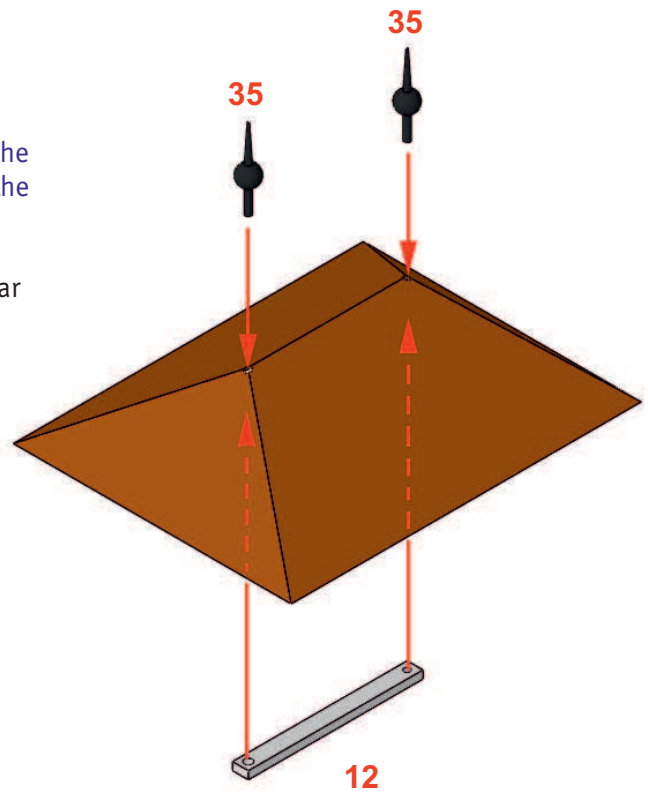


Assemble, glue and then paint the cover in orange. To assist in the operation, you can stick adhesive tape on the inside while the assembly dries.

Montar, pegar y después pintar la cubierta de color naranja, teja, etc. Para ayudar en la operación, puede pegar cinta adhesiva por el interior mientras se seca el montaje.

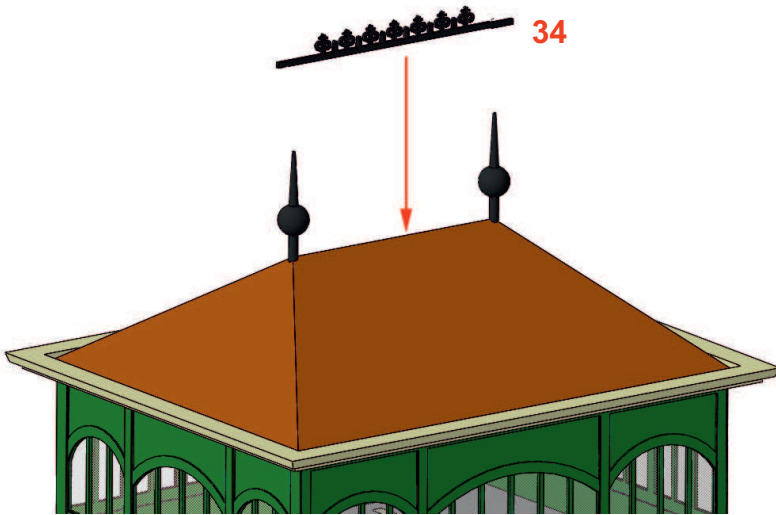
The two spikes that stick out from the top must go through the ceiling into the holes in the lower piece. The lower piece serves to keep them vertical and increase the gluing surface.

Los dos pinchos que asoman por arriba, deben atravesar el techo e introducirse en los agujeros de la pieza inferior. La pieza inferior sirve para mantenerlos verticales y aumentar la superficie de pegado.



Glue the assembly inside the upper frame.

Pegar el conjunto por dentro del marco superior.



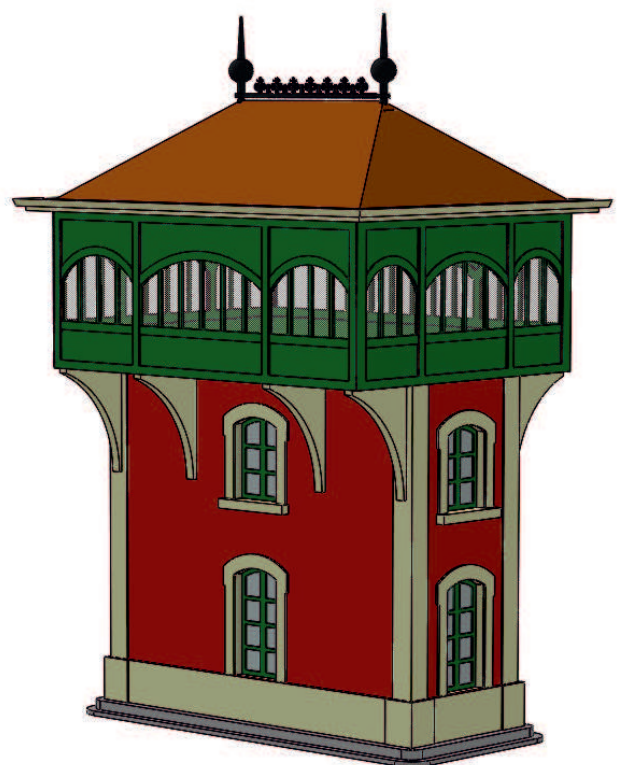
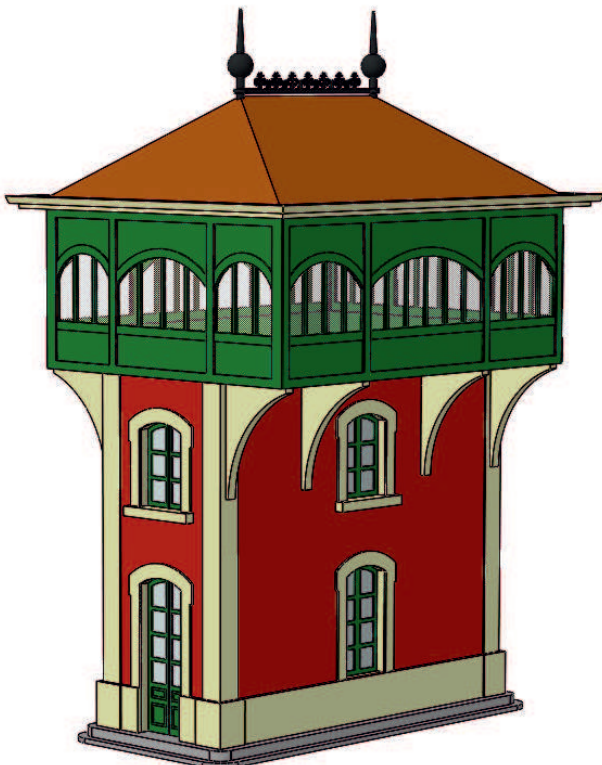
Place the upper ornament between the two spikes. Stick the excess length on the skewers.

Situar el ornamento superior entre los dos pinchos. Pegar el exceso de longitud enrollando en los pinchos.

End of assembly Fin del montaje

You can see in the two graphs below the desired result.

Puede observar en los dos gráficos inferiores el resultado deseado.



H-0303 Pueblo nuevo signal box plans

H-0303 Puesto de enclavamientos
Pueblo nuevo - planos

